




Political Trends

2000 – 2010

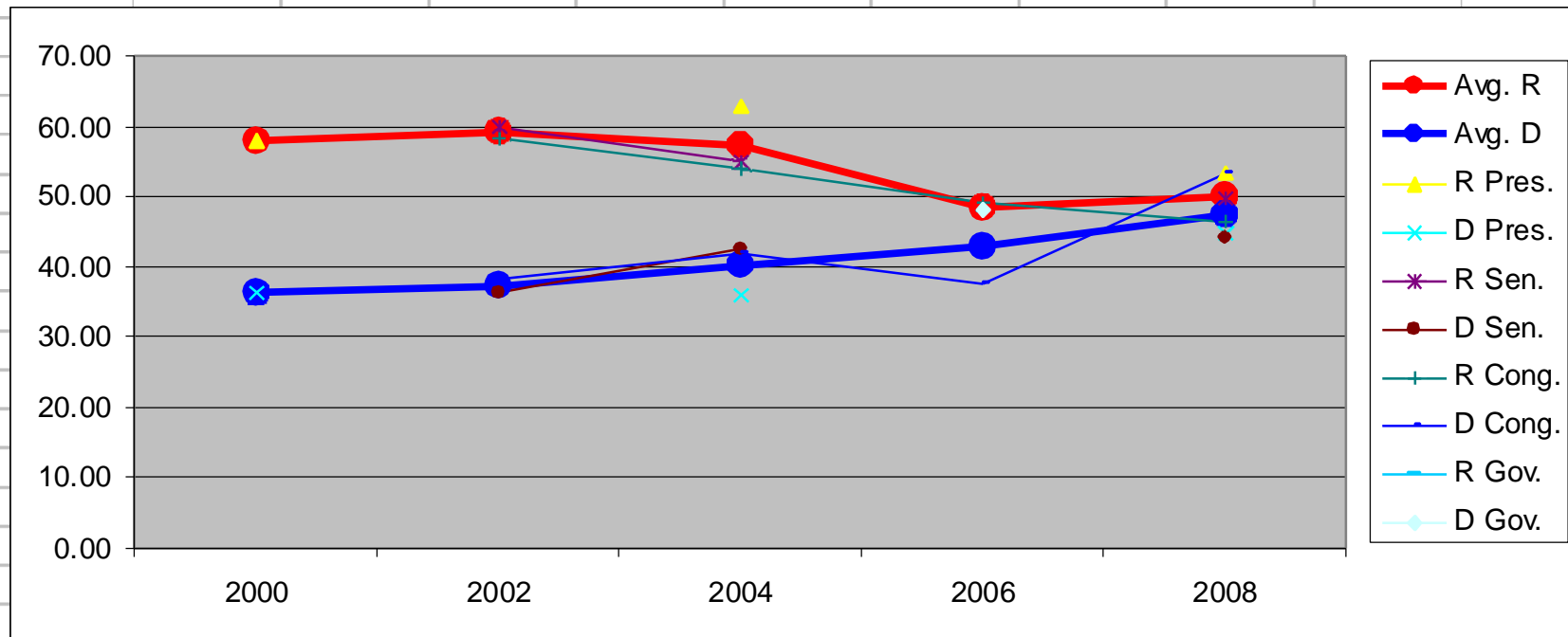


Political Trends

Governor	Bill Owens	Bill Ritter
U.S. Senator	Ben Campbell	Mark Udall
U.S. Senator	Wayne Allard	Michael Bennet
CD-4	Marilyn Musgrave	Betsy Markey
SD13	Dave Owen	Scott Renfroe
SD14	Peggy Reeves	Bob Bacon
SD15	Steve Johnson	Kevin Lundberg
HD48	Dale Hall	Glenn Vaad
HD49	Kevin Lundberg	BJ Nikkel
HD50	Tambor Williams	Jim Riesberg
HD51	Tim Fritz	Brian DelGrosso
HD52	Bob McCluskey	John Kefalas
HD53	Angie Paccione	Randy Fischer
HD65	Diane Hoppe	Jerry Sonnenberg

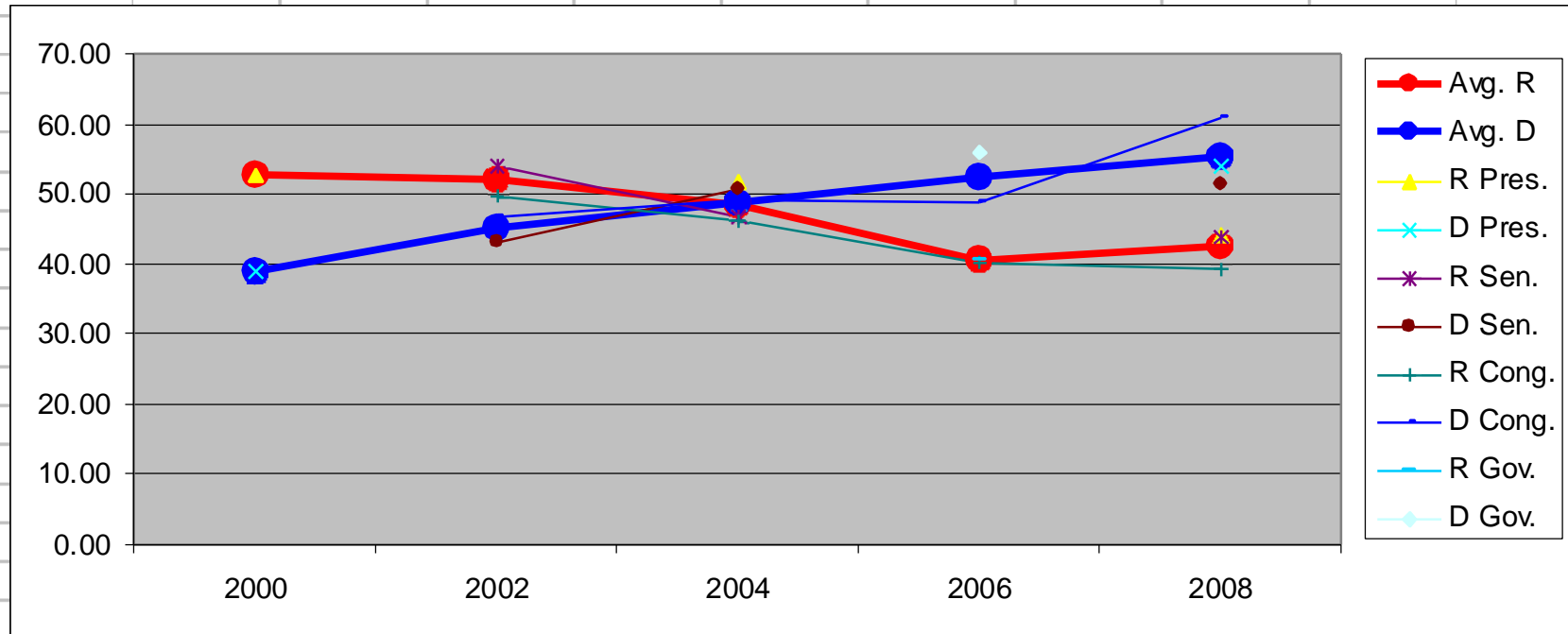
Political Trend Lines: Weld

	Avg. R	Avg. D	R Pres.	D Pres.	R Sen.	D Sen.	R Cong.	D Cong.	R Gov.	D Gov.
2000	57.96	36.31	57.96	36.31						
2002	59.10	37.32			59.99	36.46	58.21	38.17		
2004	57.19	40.13	62.65	35.91	54.83	42.65	54.09	41.83		
2006	48.28	42.78					48.94	37.53	47.61	48.02
2008	49.90	47.44	53.39	44.67	49.76	44.2	46.54	53.46		



Political Trend Lines: Larimer

	Avg. R	Avg. D	R Pres.	D Pres.	R Sen.	D Sen.	R Cong.	D Cong.	R Gov.	D Gov.
2000	52.67	38.85	52.67	38.85						
2002	51.89	45.00			53.91	43.1	49.86	46.9		
2004	48.29	48.82	51.82	46.62	46.77	50.65	46.28	49.2		
2006	40.40	52.37					40.33	48.69	40.47	56.05
2008	42.39	55.38	44.26	53.99	43.67	51.41	39.25	60.75		



Voter Registration

Larimer County

	Republican	Democrat	Unaffiliated
2002	76,011 (40.5%)	48,297 (25.7%)	63,473 (33.8%)
2008	74,451 (35.6%)	60,381 (28.9%)	74,452 (35.6%)

Weld County

	Republican	Democrat	Unaffiliated
2002	44,037 (40.3%)	28,229 (25.8%)	37,138 (33.9%)
2008	52,988 (38.2%)	35,946 (25.9%)	49,833 (35.9%)

Factors

- National Trends
 - 2006: McCluskey (47%) v. Musgrave (30-32%)
- Branding
 - Cocktail Parties and Yard Signs
 - “I usually vote Republican, but...”
- 2008: The Obama Factor
 - (Markey won in Weld)
- Funding
 - 2004: \$1.7 million in SD14
 - 2008: Presidential

All Politics is Local

Greeley

- Immigration/Schools
- Center-Right Rift

Fort Collins

- Growth/Jobs
- Center-Left Rift

Loveland

- I-25 Corridor
- Center-Right Rift

Projections

The Pendulum is Shifting Back

Governing is Hard

Re-Branding of “Republican”

Electorate – In Fort Collins – is Center-Right

2010: Taxes are Toxic

Races to Watch:

- CD4
- HD52; HD50; SD15