

Colorado Demographic Trends

Elizabeth Garner

State Demographer

Colorado Department of Local Affairs

www.colorado.gov/demography

January 2011

Elizabeth.garner@state.co.us

Department of Local Affairs



Strengthening Colorado Communities

Colorado Demography Office

□ State Agency

- Responsible for population data needed by state agencies.

□ Department of Local Affairs

- Prepares data and information in ways that account for local perspectives, needs.

□ Public Information

- Makes data and information readily available to the public, including citizens, businesses and non-profit agencies.

□ Outreach

- Work with local governments and others to understand what the numbers are saying

Who Are We and Why Does it Matter?

- ❑ Services – age, race/ethnicity
- ❑ Housing – prices, types
- ❑ Jobs – education, wages
- ❑ Market
- ❑ Schools
- ❑ Health Care
- ❑ Its all related....
- ❑ Now
- ❑ Future - Planning

State Is Very Diverse

- ❑ **Different economic drivers will result in different demographics (age, education etc.)**
 - **Tourism, Agriculture, Oil and Gas, Retirees National/Regional Services.**
 - **Environment – natural or built will facilitate different economic drivers.**
- ❑ **Age distribution varies**
 - **Economy – type of industry**
 - **Access to Education**
 - **Environment – natural or built will facilitate different demographic segments. (outdoor recreation, home prices/types, transportation)**
- ❑ **Understanding your economic drivers will help to understand the demographic components of your area**

Its All About Relationships

- ❑ **The Economy:** jobs, personal income.
- ❑ **The Labor Market:** commuters, second jobs, the Labor Force = employed + unemployed.
- ❑ **POPULATION:** by age and gender.
- ❑ **Social Characteristics:** ethnicity, other.
- ❑ **Living Arrangements:** group qtrs, households.
- ❑ **Household Income:** by household types.
- ❑ **Housing Units:** various characteristics.

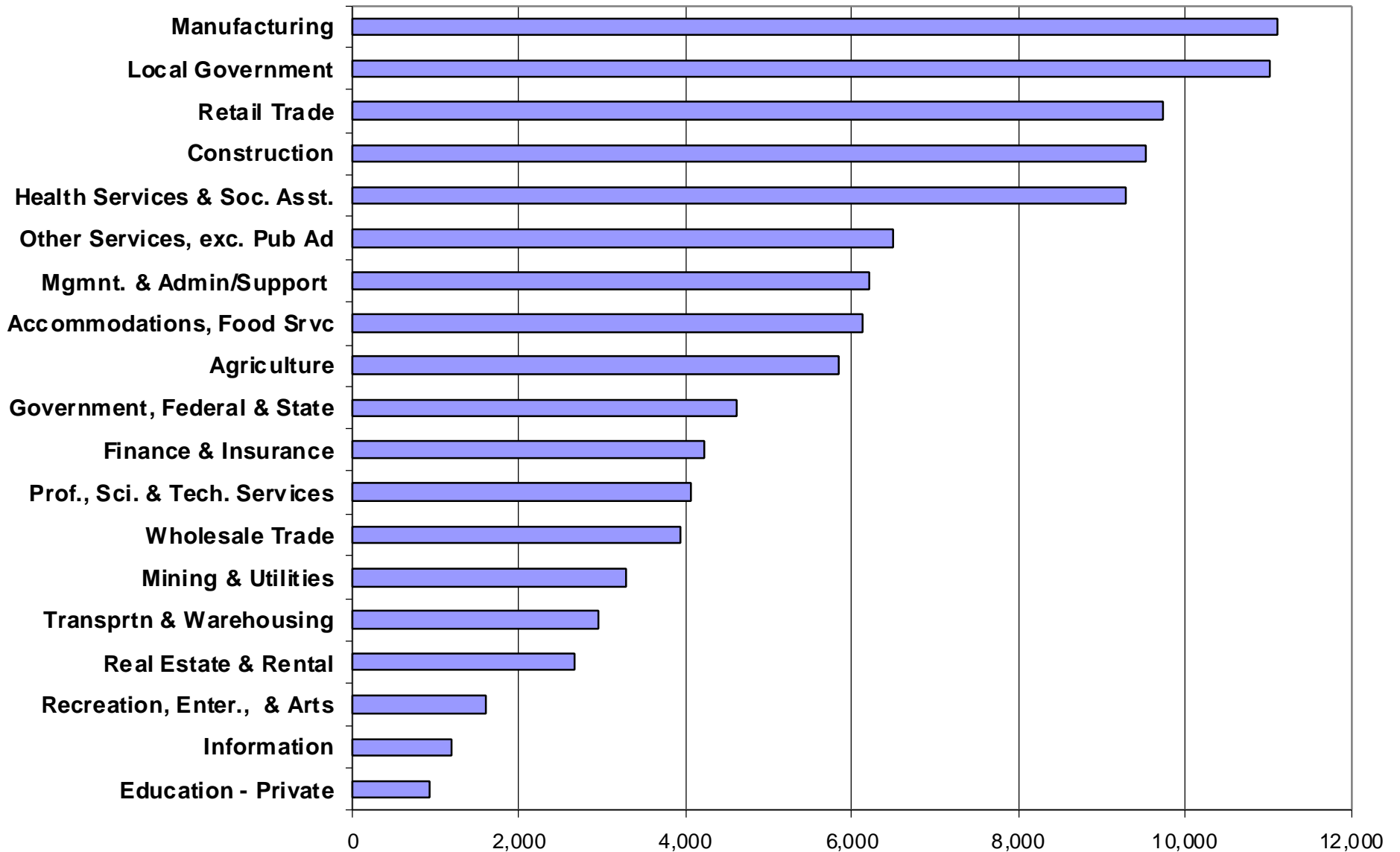
Current Colorado Profile

- ❑ April 2010 population estimate of 5 million 9th fastest growth at 16.9% in the US from 2000.
 - US grew at 9.7%
- ❑ Annual average growth rates within the state since 2000 range from 5.6% to -1.4%
- ❑ The 7 county metro area has an estimated 2009 population of 2.82 million or 55% of the total state population.
- ❑ Since 2000 the fastest growing part of the state has been the North Front Range with an annual average growth rate of 2.7% followed by the Western Slope at 2.2%.

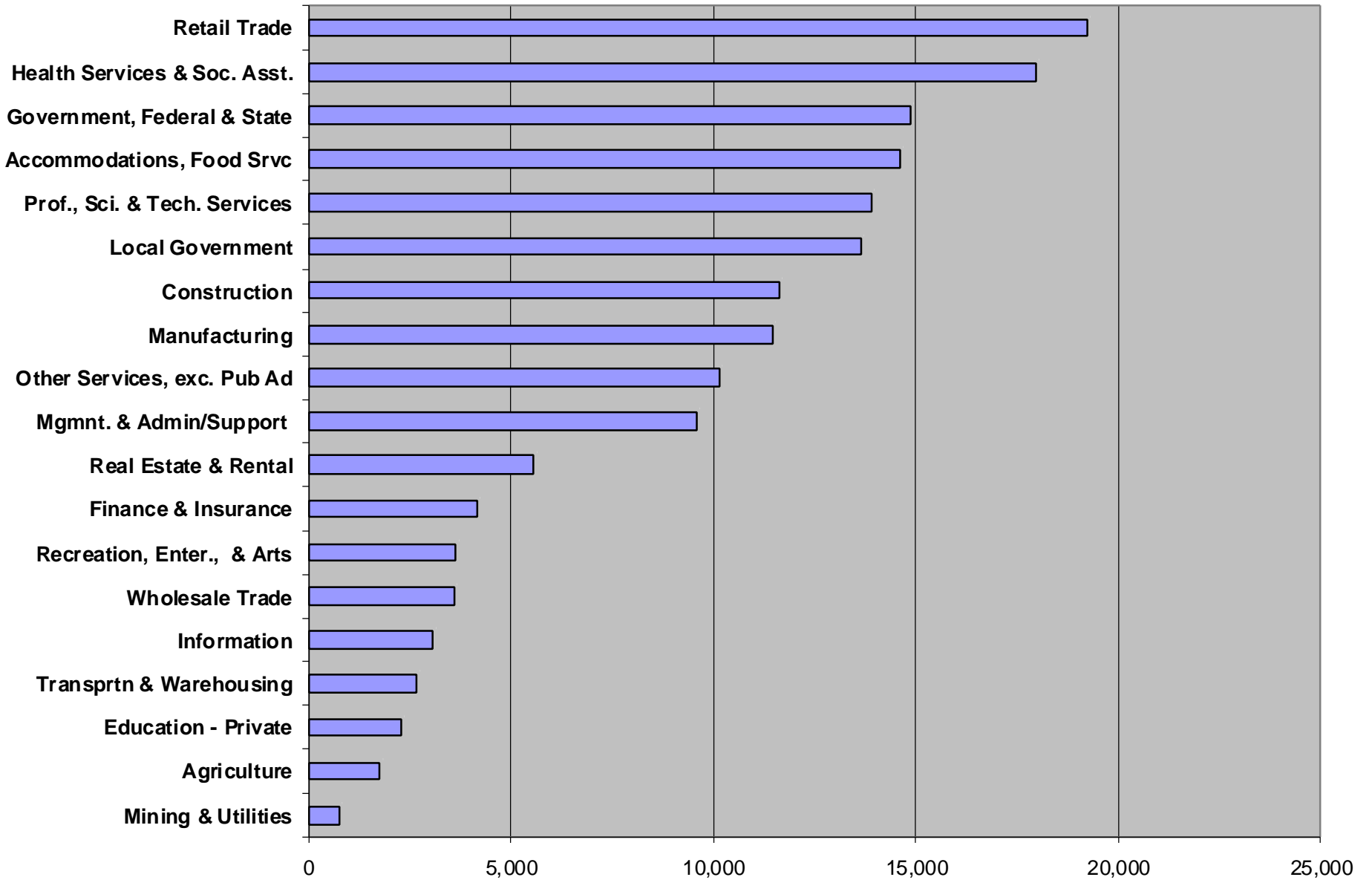
Demographic Profile for Larimer and Weld

- Economic
 - Total Estimated Jobs by Industrial Sector
 - Economic Base
 - Forecast of the Base Industry Groups
- Population
 - Estimates 2000-09
 - Households/housing
 - Characteristics (age, education, income etc)
 - Forecasts
- Census Bureau American Community Survey
 - Detailed Characteristics

Weld Total Estimated Jobs 2009



Larimer Total Estimated Jobs 2009

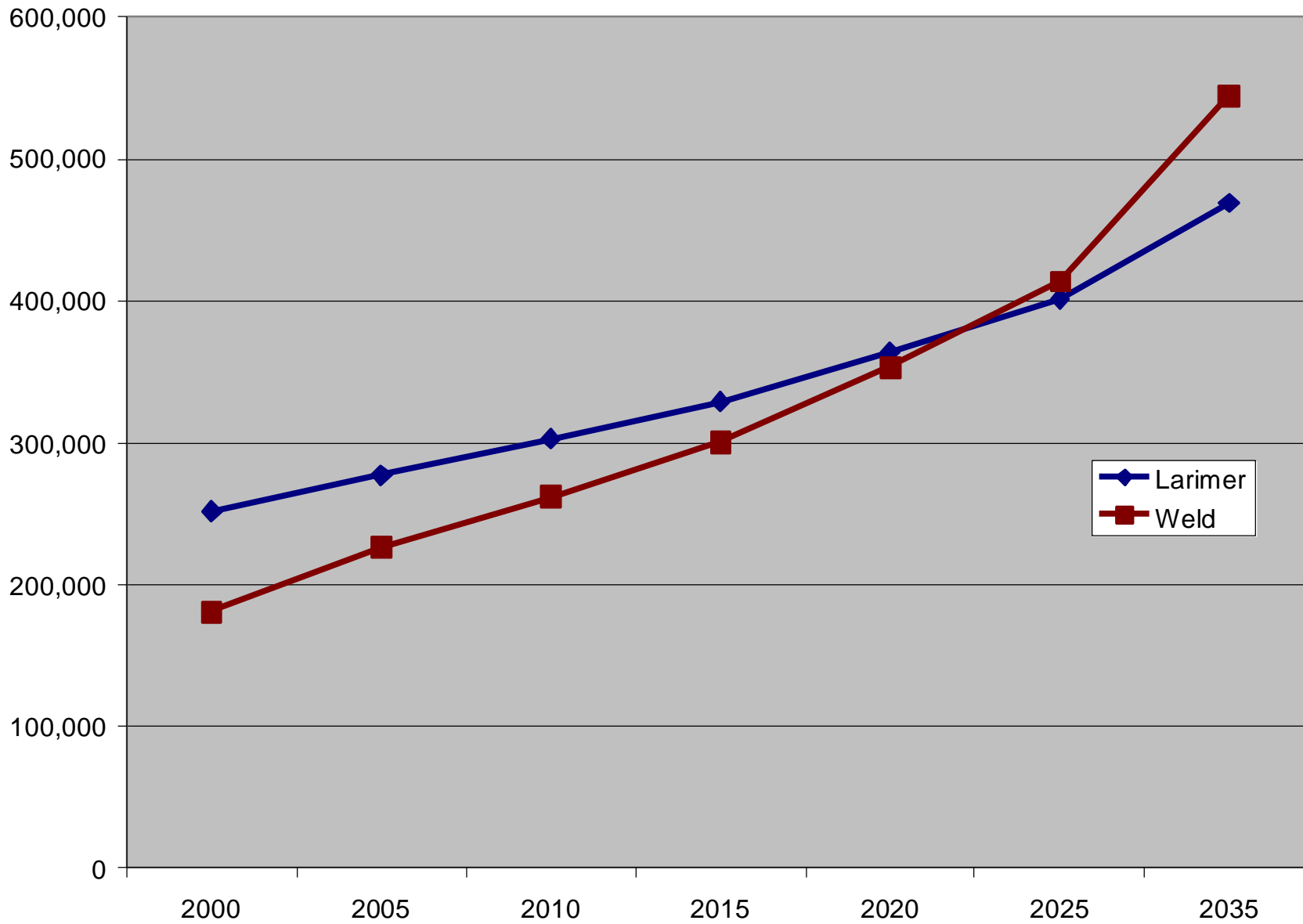


PERSONAL INCOME - REGION 2 COUNTIES, 2008

	Percent of Total Personal Income			
	Region 2	Larimer	Weld	Colorado
Total Personal Income	100.0%	100.0%	100.0%	
Earned Income by Residents	69.3%	67.9%	71.6%	72.0%
Earnings by Place of Work	70.3%	69.1%	72.1%	80.0%
- Contrib. For Social Ins.	-7.2%	-7.2%	-7.3%	-8.1%
Residency Adjustment	6.3%	6.0%	6.8%	0.2%
Transfer Payments	11.8%	10.7%	13.8%	10.0%
Retirement & Disability	4.8%	4.6%	5.0%	3.9%
Medical: Medicare,-caid, VA	4.6%	3.9%	5.7%	4.0%
Other	2.5%	2.1%	3.1%	2.1%
Dividends, Interest, and Rent	18.8%	21.4%	14.6%	17.9%

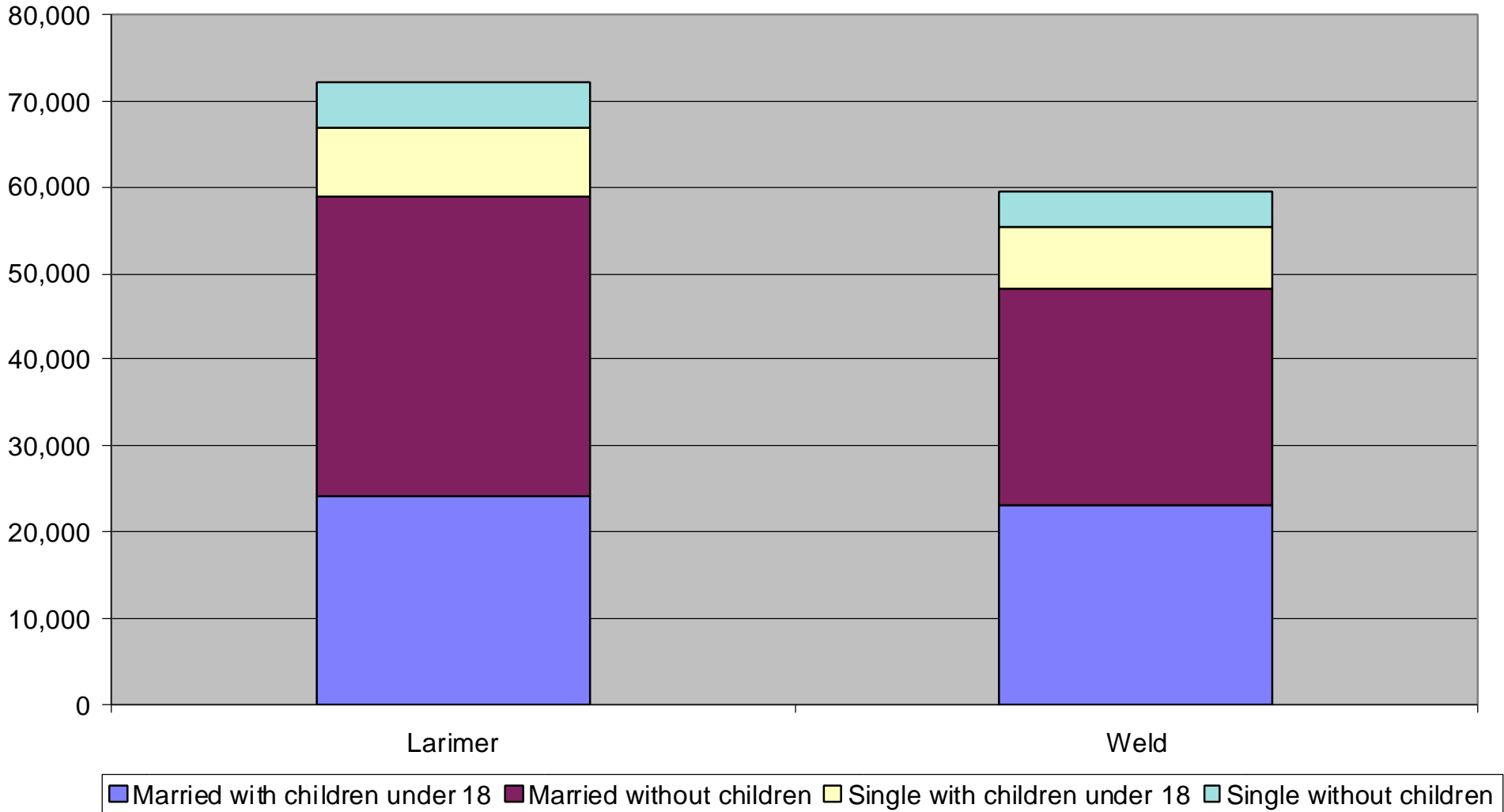
NORTH FRONT RANGE - REGION 2			
ECONOMIC BASE (JOBS), 2009			
	Region 2	Larimer	Weld
TRADITIONAL	54,546	28,808	25,739
Agribusiness	17,922	4,266	13,656
Mining	3,287	269	3,018
Manufacturing	12,551	8,621	3,930
Government	20,787	15,652	5,134
NAT'L / RGL SERVICES	37,720	25,347	12,373
Mining, Construction	4,523	2,508	2,015
Trade & Transportation	4,442	2,522	1,920
Information, Comm.	1,553	1,115	439
Financial Activities	1,394	464	930
Prof. & Business Srvcs	10,498	8,365	2,133
Health & Education	15,279	10,351	4,928
TOURISM	12,612	9,444	3,168
Recr., Lodging, Food	8,900	7,149	1,751
Real Est., Construction	1,450	858	592
Retail Trade	1,519	1,006	512
Transportation	742	430	313
HOUSEHOLD BASIC	42,329	27,498	14,830
Retirees	16,845	11,456	5,389
Commuters	11,327	6,749	4,578
Trans <65	5,688	3,281	2,407
DIR < 65	8,468	6,012	2,457
TOTAL DIRECT BASIC	147,207	91,097	56,110
TOTAL INDIRECT BASIC	22,615	13,900	8,715
TOTAL NON-BASIC	99,244	59,267	39,977
(Wrkr LRS)			
TOTAL ALL JOBS	269,066	164,264	104,802
Ratio: Ind + NB / D. B.	0.83	0.80	0.87
Ratio: Total / Dir. Basic	1.83	1.80	1.87

Population Trends in Larimer Weld Counties

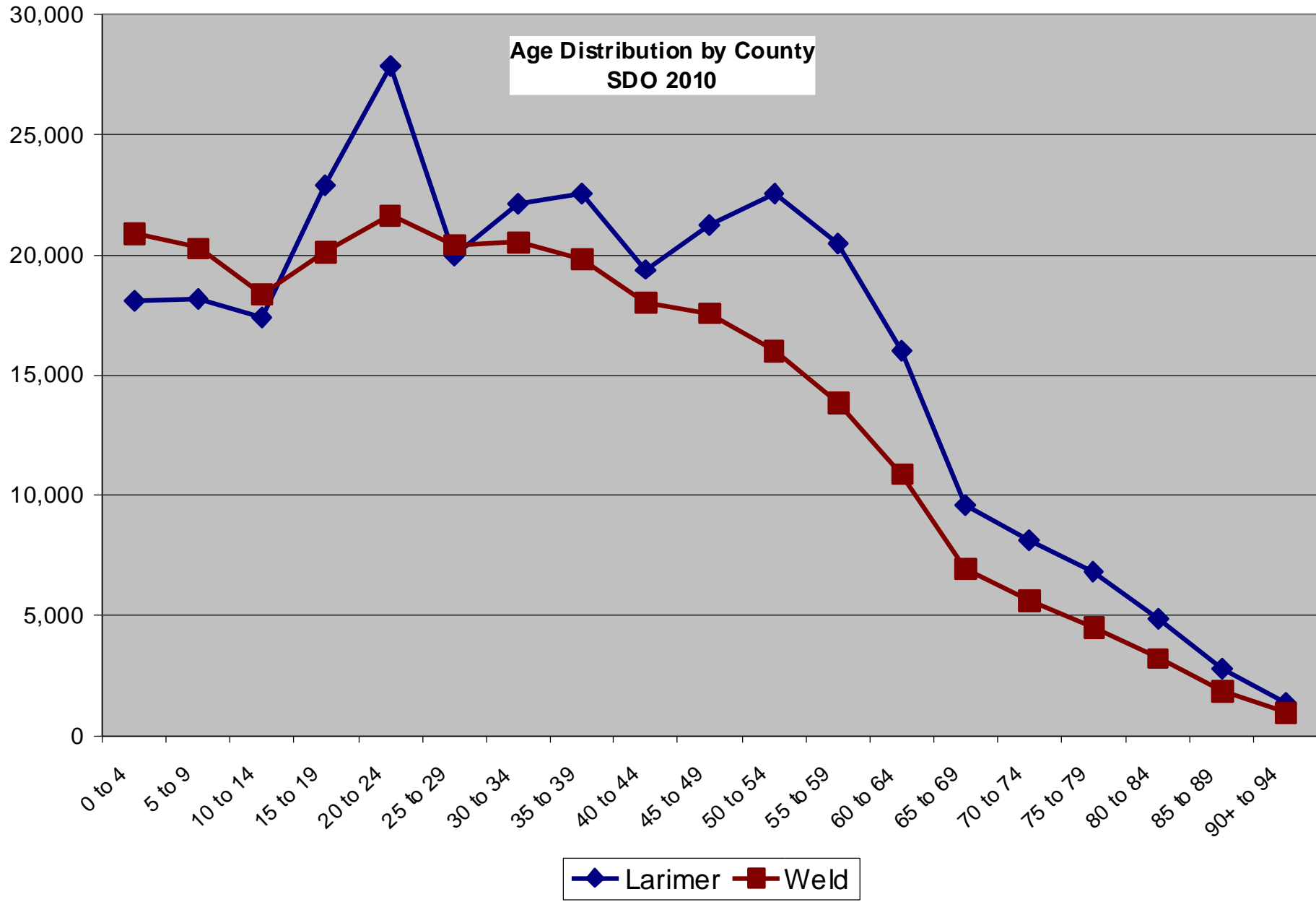


Family Types

American Community Survey 2005-09



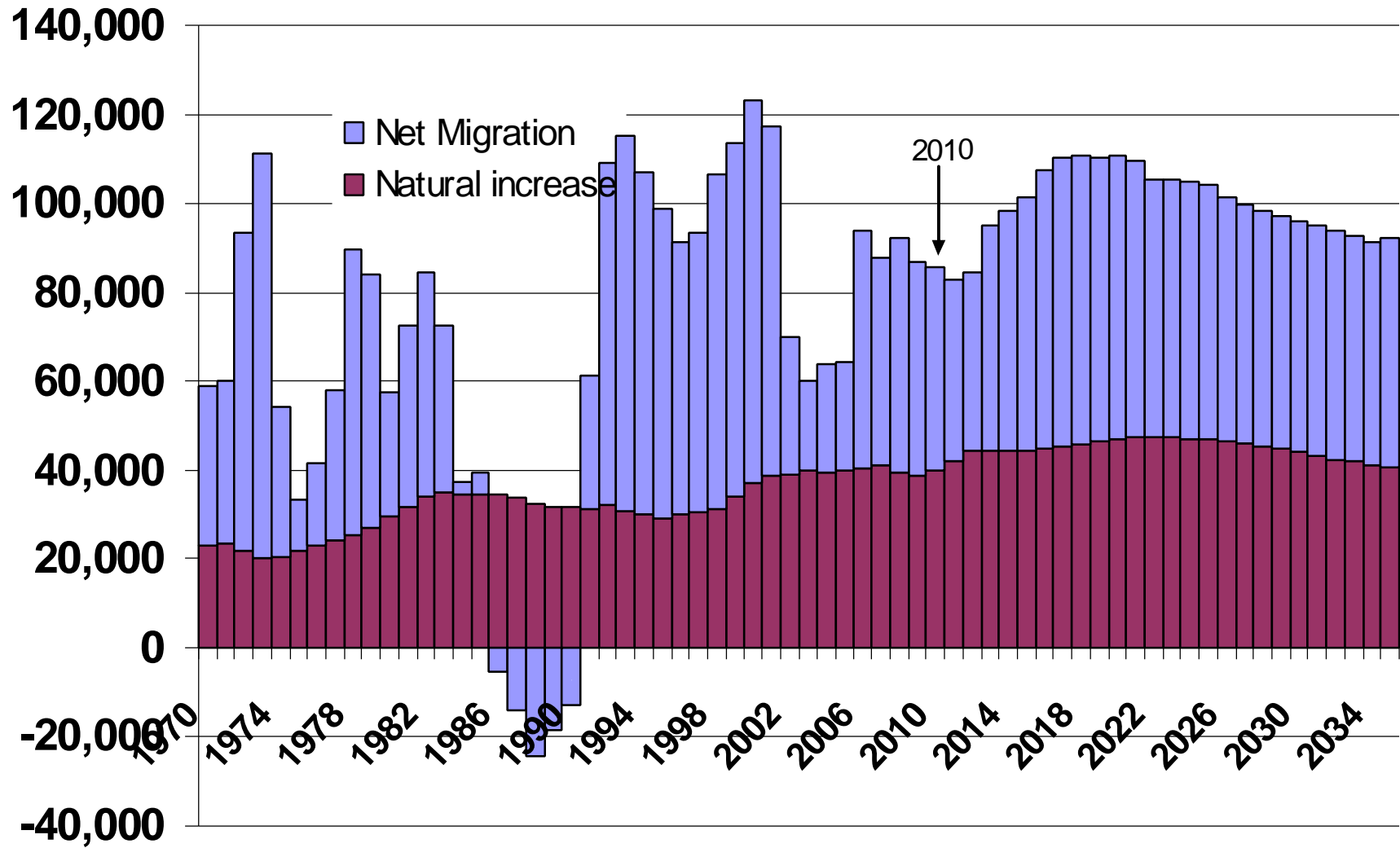
Age Distribution by County
SDO 2010



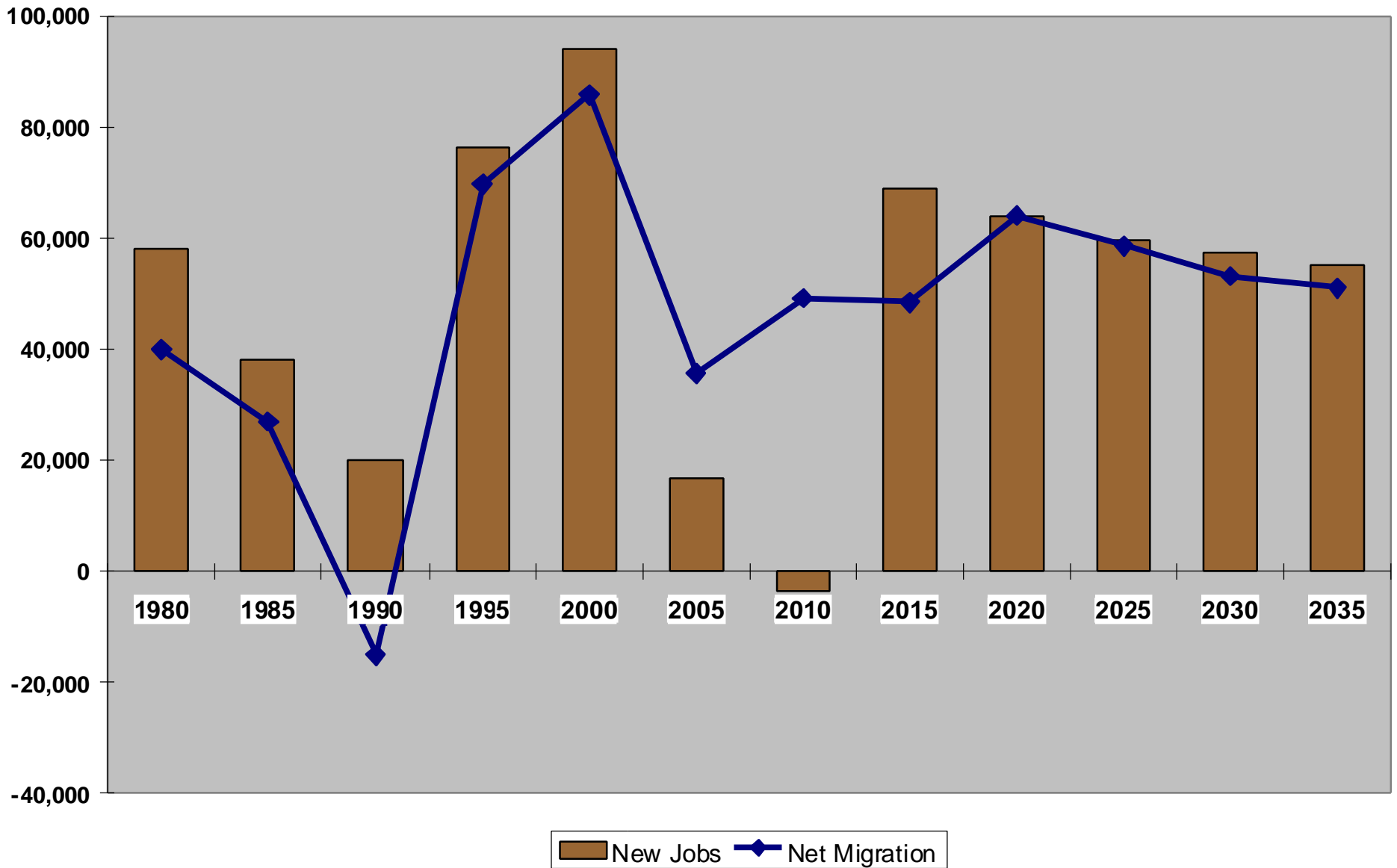
Overview of Demographic Trends

- ❑ Most of Colorado's population change is related to economic change.. net migration.
- ❑ Aging of the Baby Boomers
- ❑ Growing racial and ethnic diversity
- ❑ Changing occupational mix
- ❑ Growing income diversity

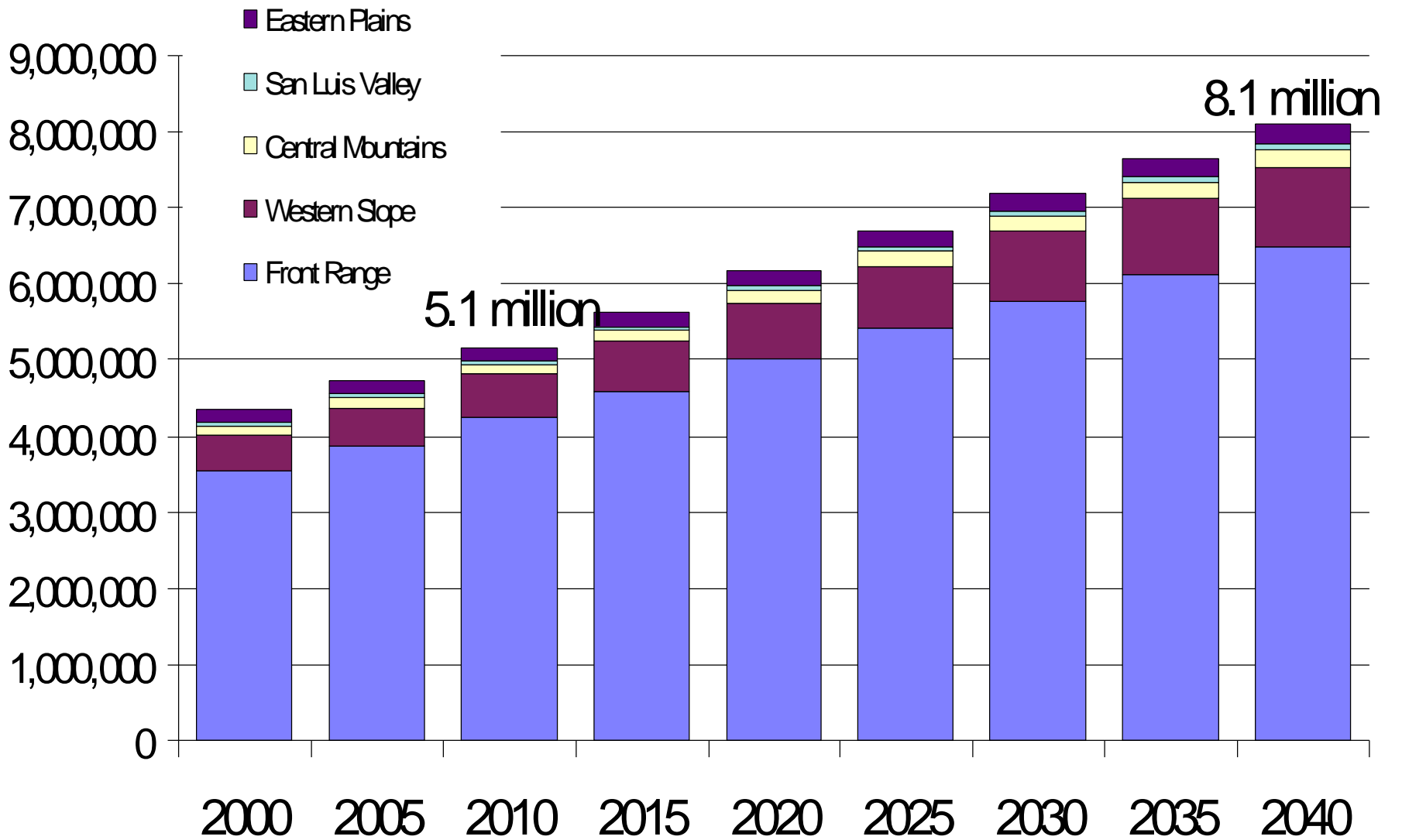
Colorado Population Change



Colorado Net Migration and Job Growth



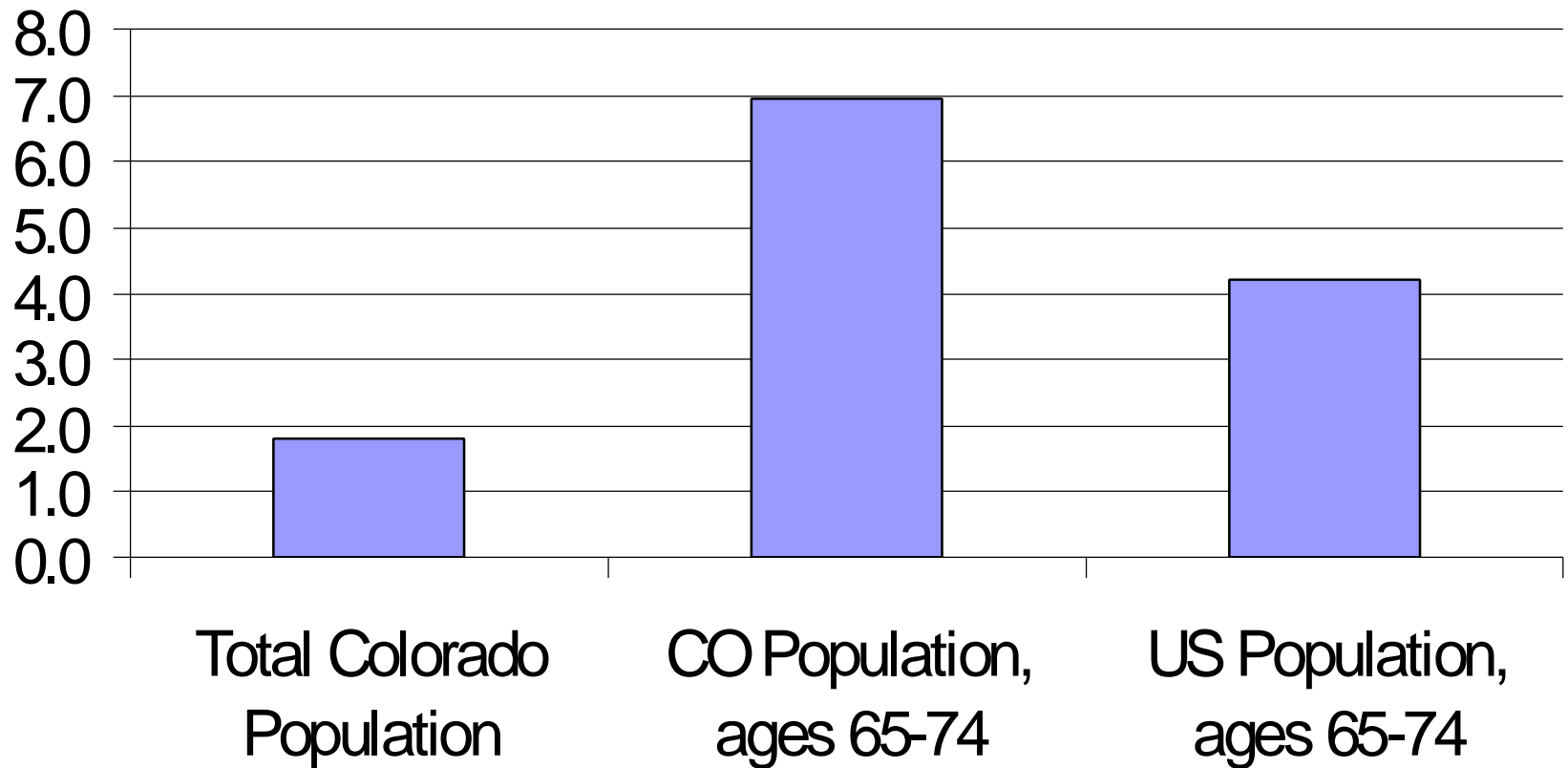
Source: State Demography Office



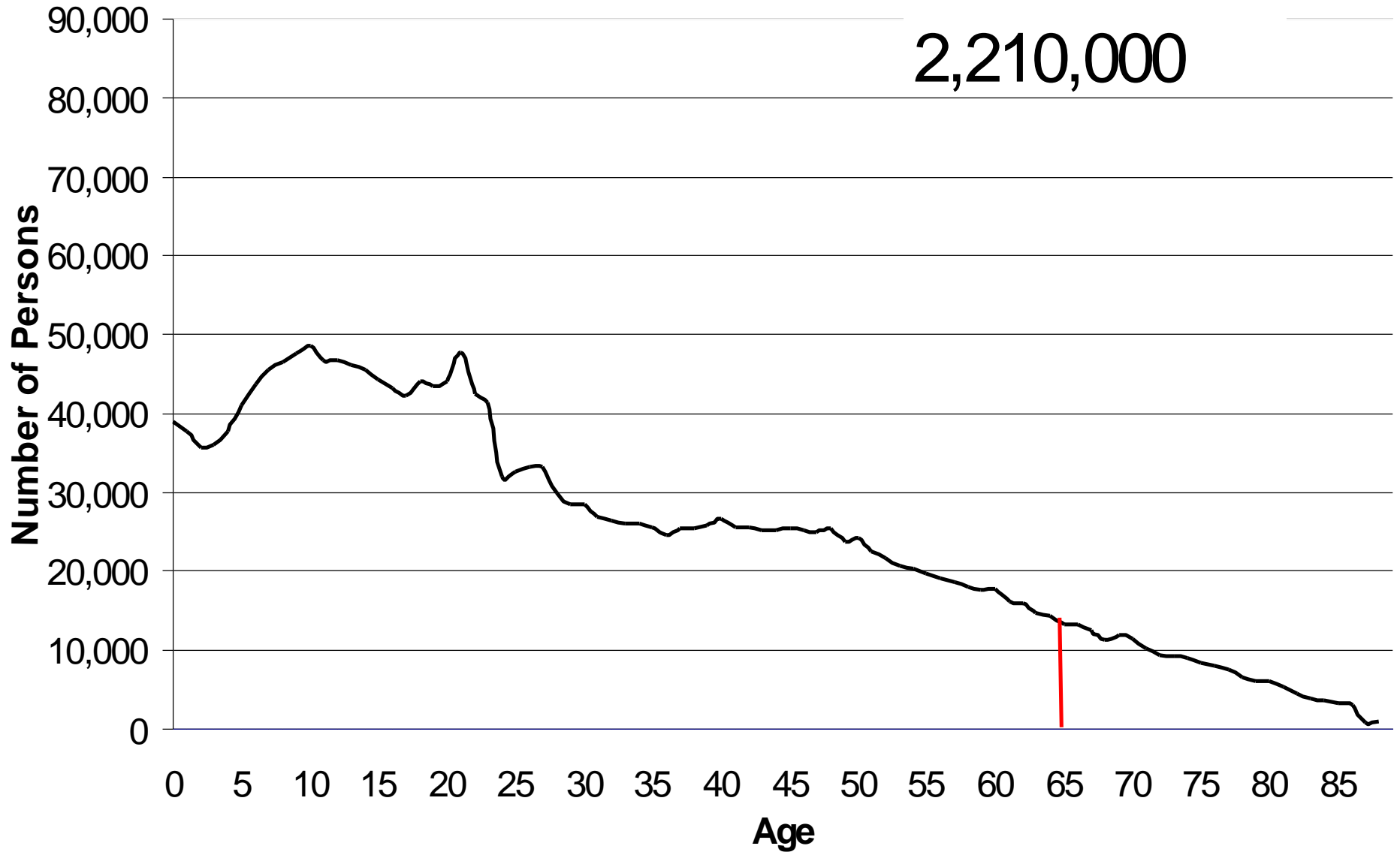
Baby Boomers

- ❑ Born 1946 – 1964.
- ❑ First “Boomers” will soon reach 65 and are currently aged between 45 and 65.
- ❑ Between 2000 and 2010, Colorado’s population 55 – 64 increased by an annual average of 6.1% from 338,000 to 619,000 compared to the total population of 1.8%
- ❑ By 2030, Colorado’s population 65 and over will be 3 times that in 2000 growing from 400,000 to 1.3 million.

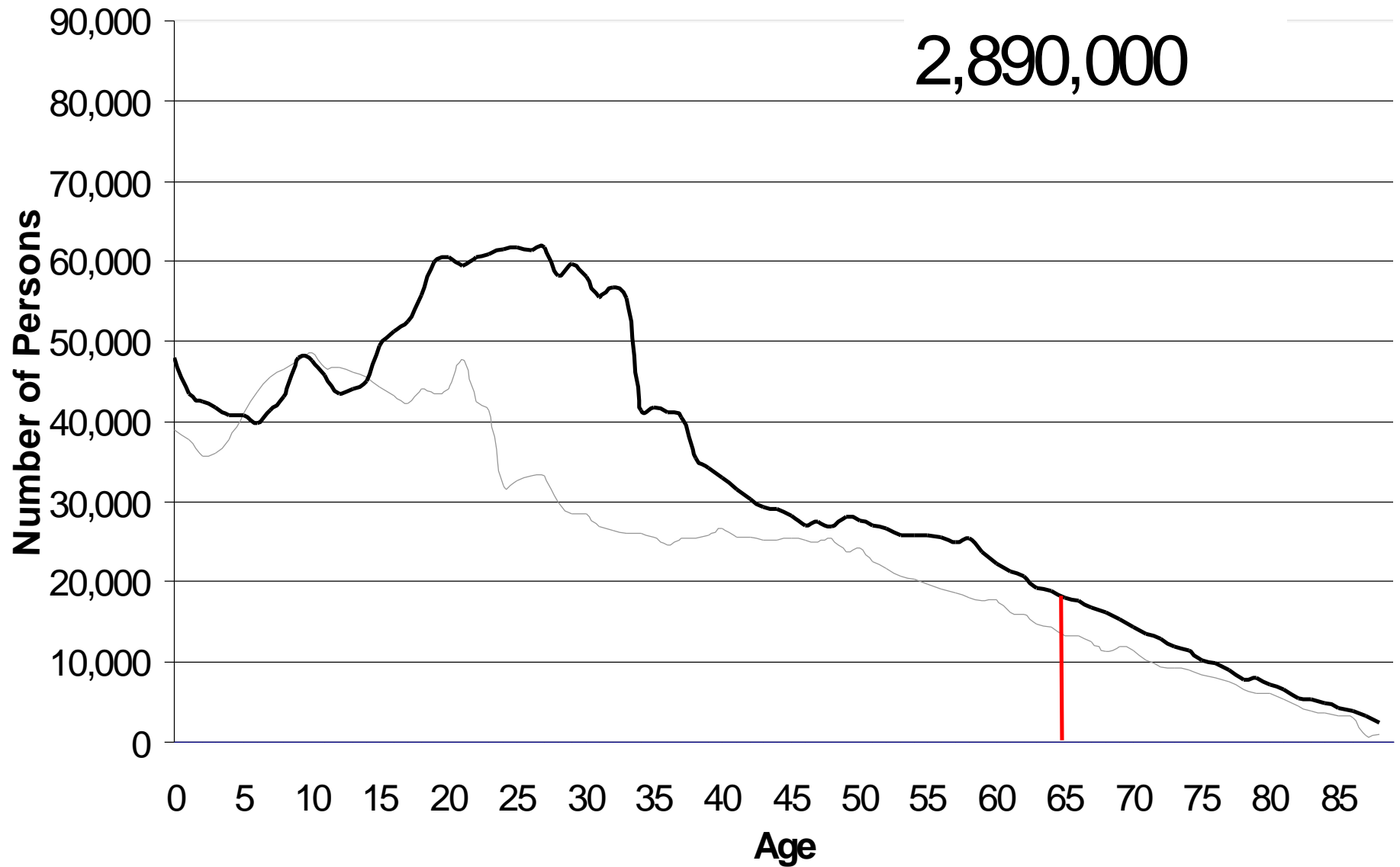
Annual Average Growth, 2010 - 2020



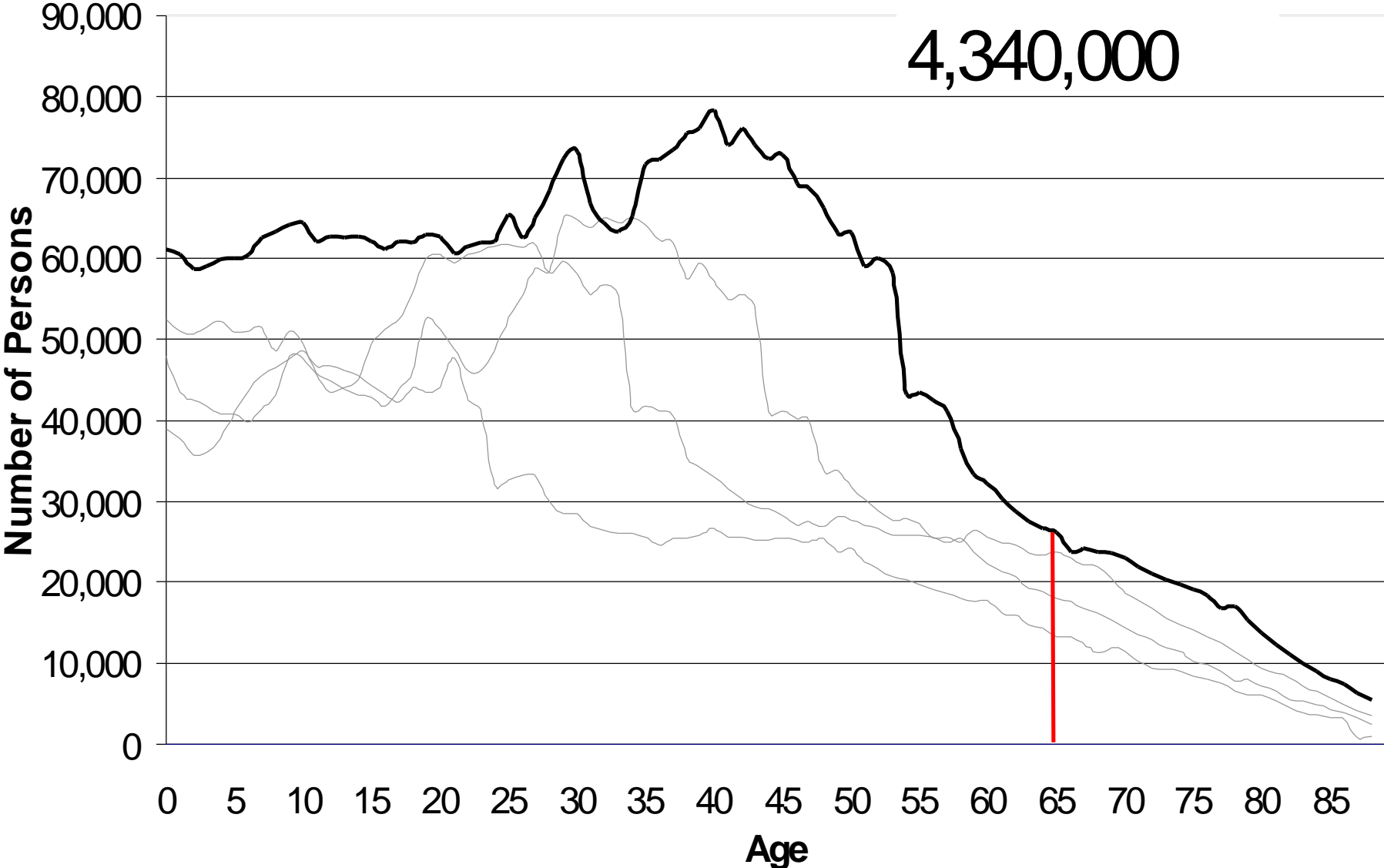
Colorado Population by Age 1970



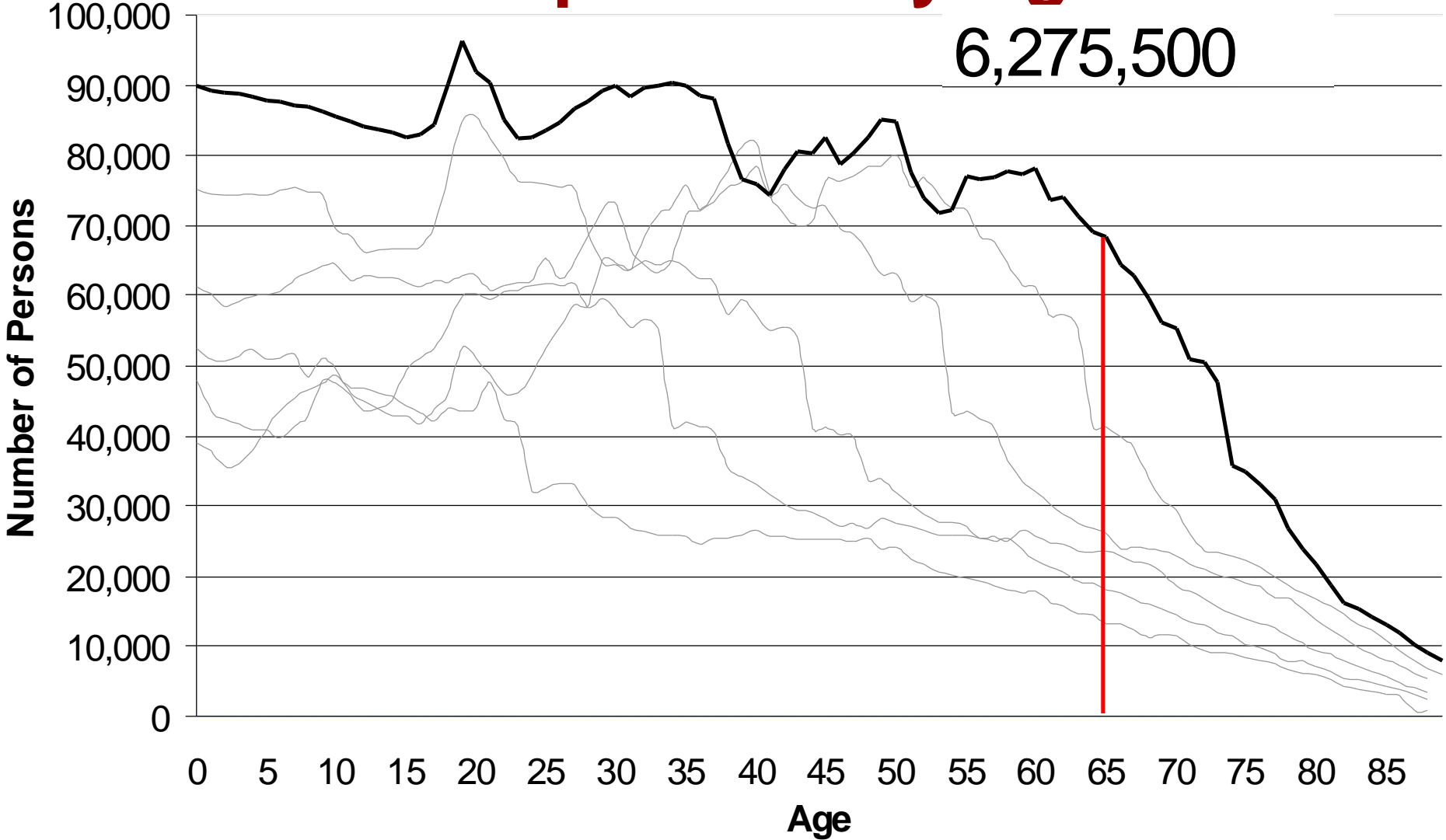
Colorado Population by Age 1980



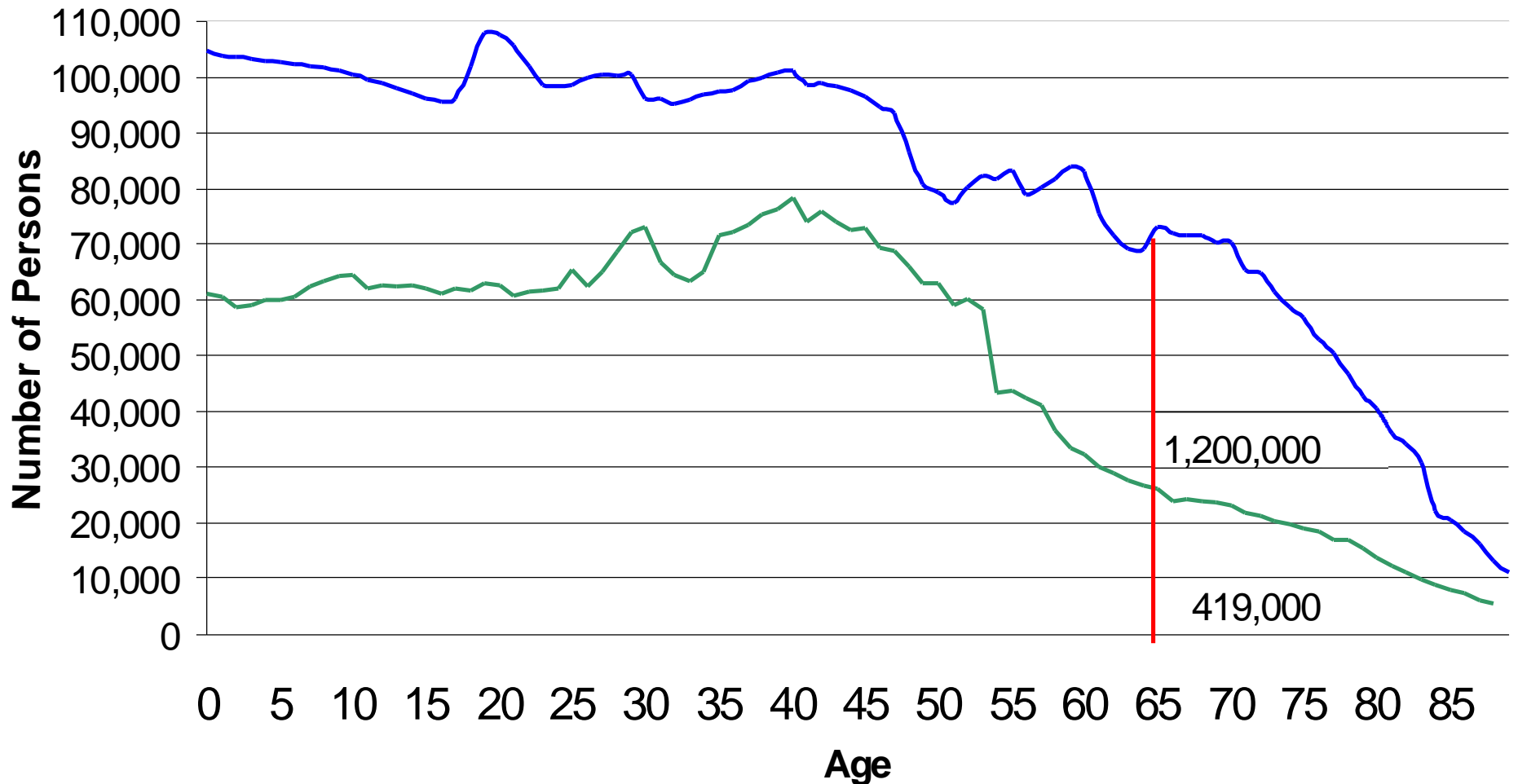
Colorado Population by Age 2000



Colorado Population by Age 2020



Colorado Population By Age 2000 and 2030



Aging Issues

- Numbers
 - Colorado has never had many older people
 - 4th lowest in 65+ (2000 Census)
 - 6th highest in baby boomers - 31% (2000 Census)
 - Migrate in people primarily 20-40
- Healthier
 - 65-75 - Active
 - 75+ - Service Demands, New Issue
- Economic Driver - wealthier depends
 - Spending of people 65+ supported approximately 118,000 jobs in 2009. (.25 jobs per person 65+)
 - Forecast to support 346,000 by 2030
 - Impact on occupational mix
 - Health Services both high and low end

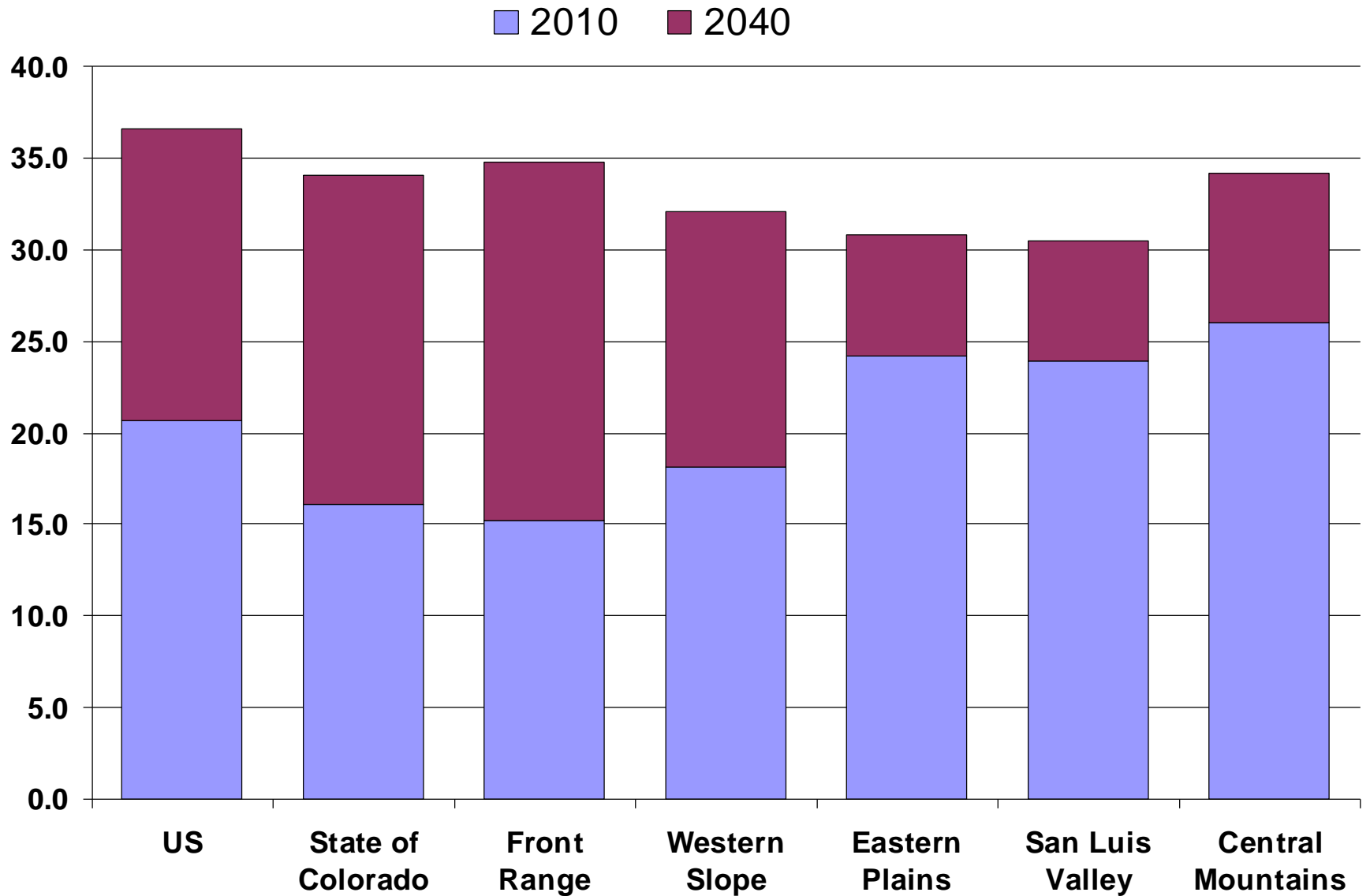
Aging Issues

Labor Force

- ❑ The share of the population in the labor force has been increasing over time but will begin to decline in the next 5-10 years due to aging.
- ❑ Boomers are 45% of the labor force (2000)
 - Staying longer in workforce – want and need to
 - Data already showing larger share of 65+ staying in labor force
- ❑ Increase demands
 - Replacement - demand by sector is different.
 - new demands created by retiree needs
 - Increase in demand for caregivers – informal sector

Aged Dependency Ratio

Pop 65+ per person 18-64



Aging Issues

Housing and Household Trends

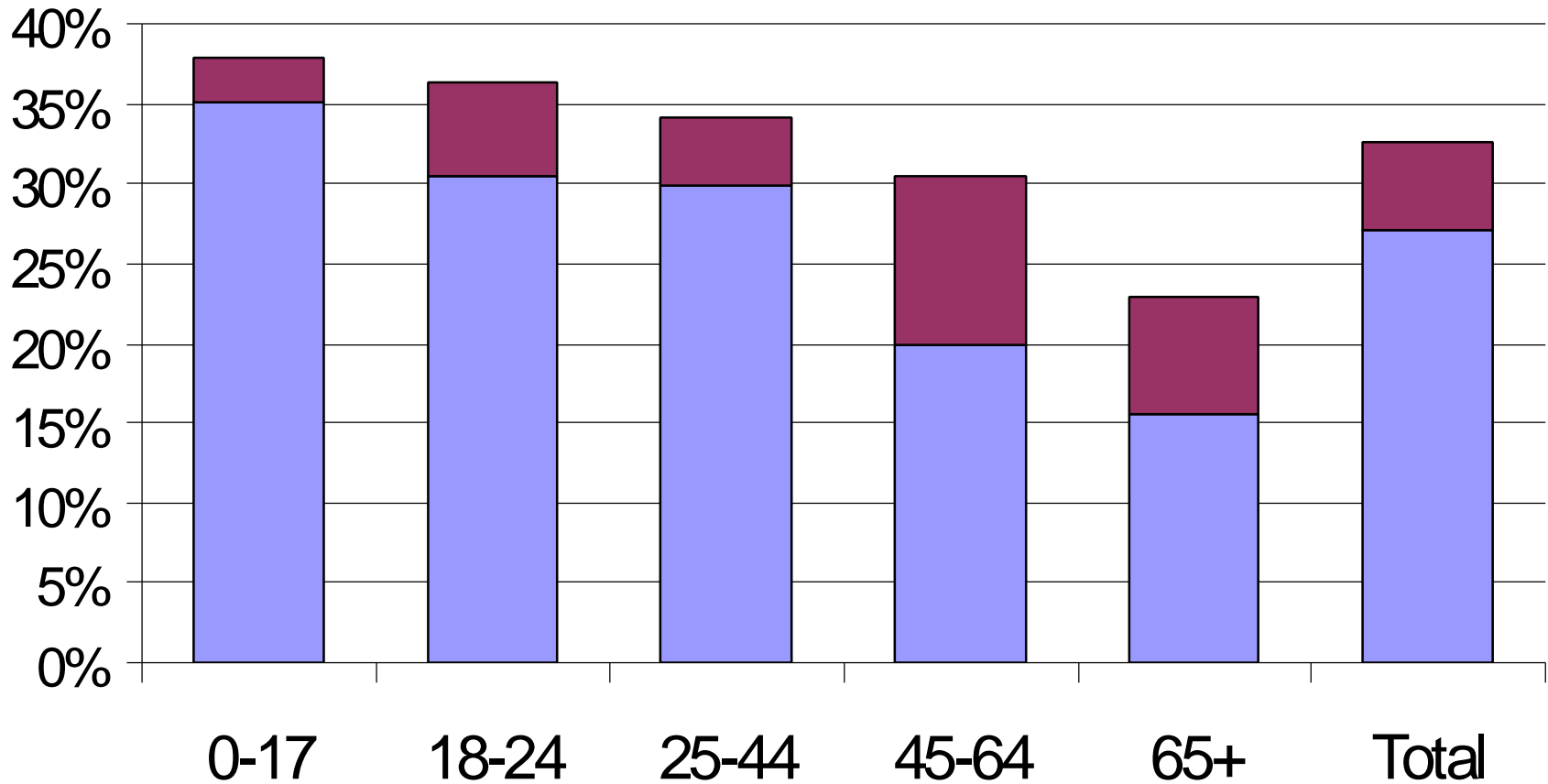
- ❑ Retirees – will they stay or go? – where will they go? Migration?
- ❑ Persons per household are forecast to shrink
 - Baby boomers – kids are leaving
 - Changes in household formation
 - Increase demand for housing units
 - Households at risk – single older women.
- ❑ Type of housing – demand by age.
 - Developers should watch demographic changes
- ❑ Location choice related to amenities, health services, transportation services, costs.

Race and Ethnicity Trends

- Colorado's population will continue to become more diverse.
 - Share of minority expected to increase from 27.1 in 2010 to 32.6 by 2040.
- 16% of Colorado's current population over age 65 is a minority.
- 35% of Colorado's population under age 18 is a minority.

Colorado Minority Share of Total Population by Age Group

2010 2040



Occupational Mix

- Continue shift out goods-producing into service producing
 - High tech.
 - Business services
 - Health and social services
- Aging demand
- Growth projected at both the higher and lower ends of pay range.
 - Information technology, health care
 - Health care, hospitality

Demographics and Income

Household Income can be influenced by:

- ❑ Age distributions
 - An increase at the young or older end will cause median HH Inc. to fall.
- ❑ Occupational Mix
 - Growth projected at both the higher and lower ends of pay range.
- ❑ Income inequality growing.
- ❑ Largest job declines have been at the low wage occupations.
- ❑ Poverty is increasing.

Conclusions

- ❑ The number and the types of jobs we create greatly influence the characteristics of our population.
- ❑ Occupational mix is changing.
- ❑ Our age distribution is becoming more “average”
- ❑ The aging of the “baby boomers” will greatly impact our concept of retirement and aging.
- ❑ Household income changes
- ❑ Racial/Ethnic diversity increasing

Census 2010 Release Schedule

- ❑ February/March 2011- Redistricting data set. Total Population, 18+, Race/eth., housing, down to the block level.
- ❑ June – Rest of data on flow basis.
- ❑ Characteristic Data – American Community Survey.
 - http://factfinder.census.gov/home/saff/main.html?_lang=en
 - Social, Economic, Demographic, Housing
 - 1 yr (65K+), 3 yr (20K+), 5 yr (all places)

Resources:

- ❑ State Demography Office:
www.colorado.gov/demography
- ❑ Regional Profiles:
https://dola.colorado.gov/dlg/demog/region_profiles.html
- ❑ Colorado Redistricting Website:
<http://www.colorado.gov/cs/Satellite/CGA-ReDistrict/CBON/1251581769173>
- ❑ Census Bureau: www.census.gov
- ❑ Census Redistricting website:
www.census.gov/rdo