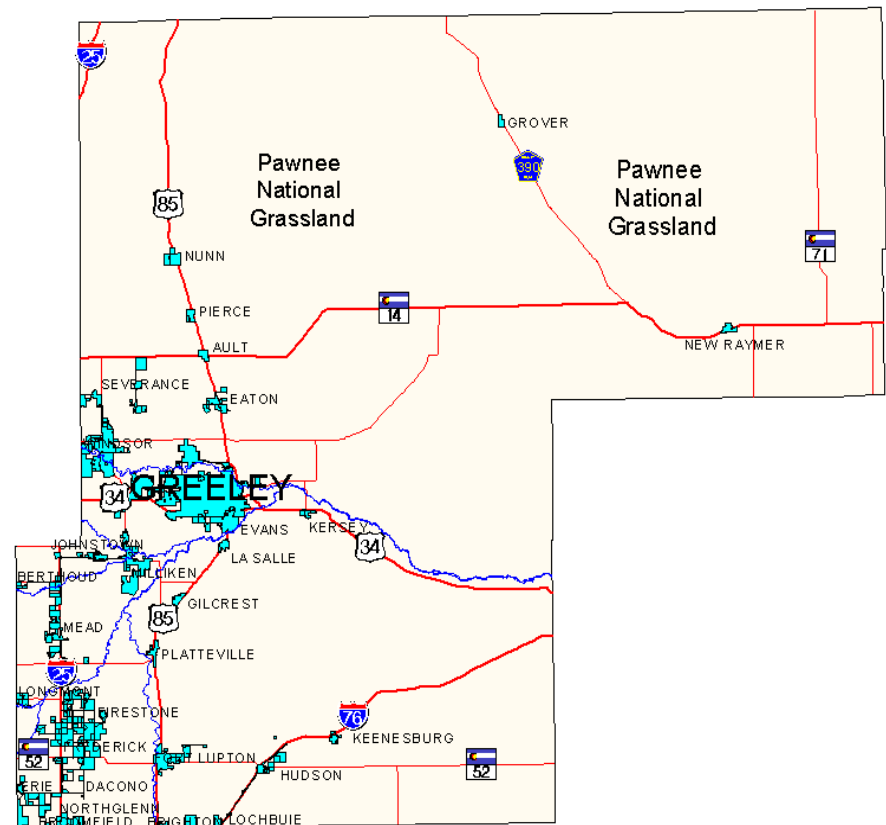


Monica Daniels-Mika
Director of Finance and Administration

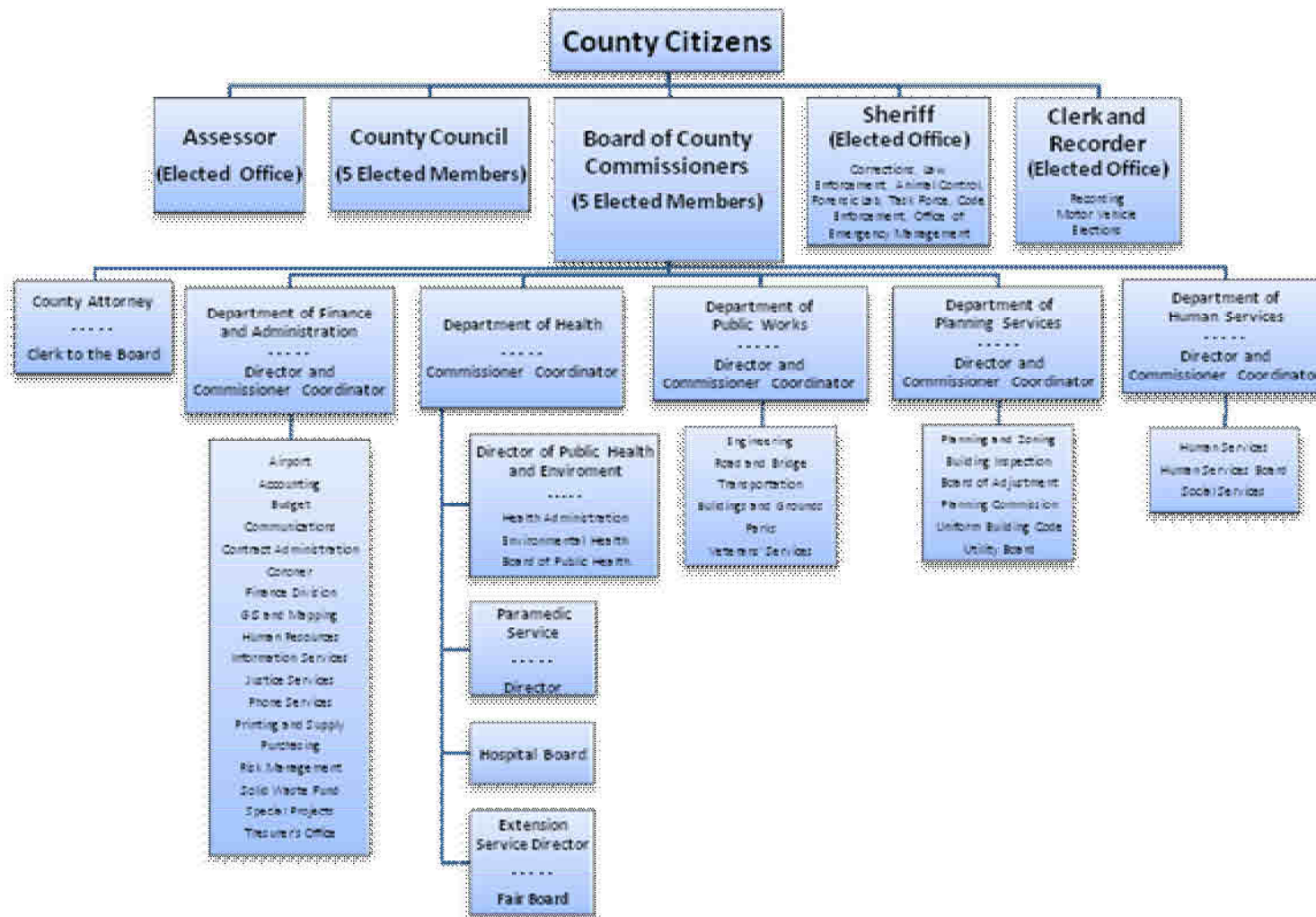
Weld County Overview

Basic Facts

- Incorporated: 1861.
- 2008 Pop: 252,272.
- Area: 3,999 Square Miles.
- Municipalities: 32.
- 8th most valuable agricultural industry in the Country
- 2nd Leading area of Oil/Gas in the State



Organization



County Commissioners



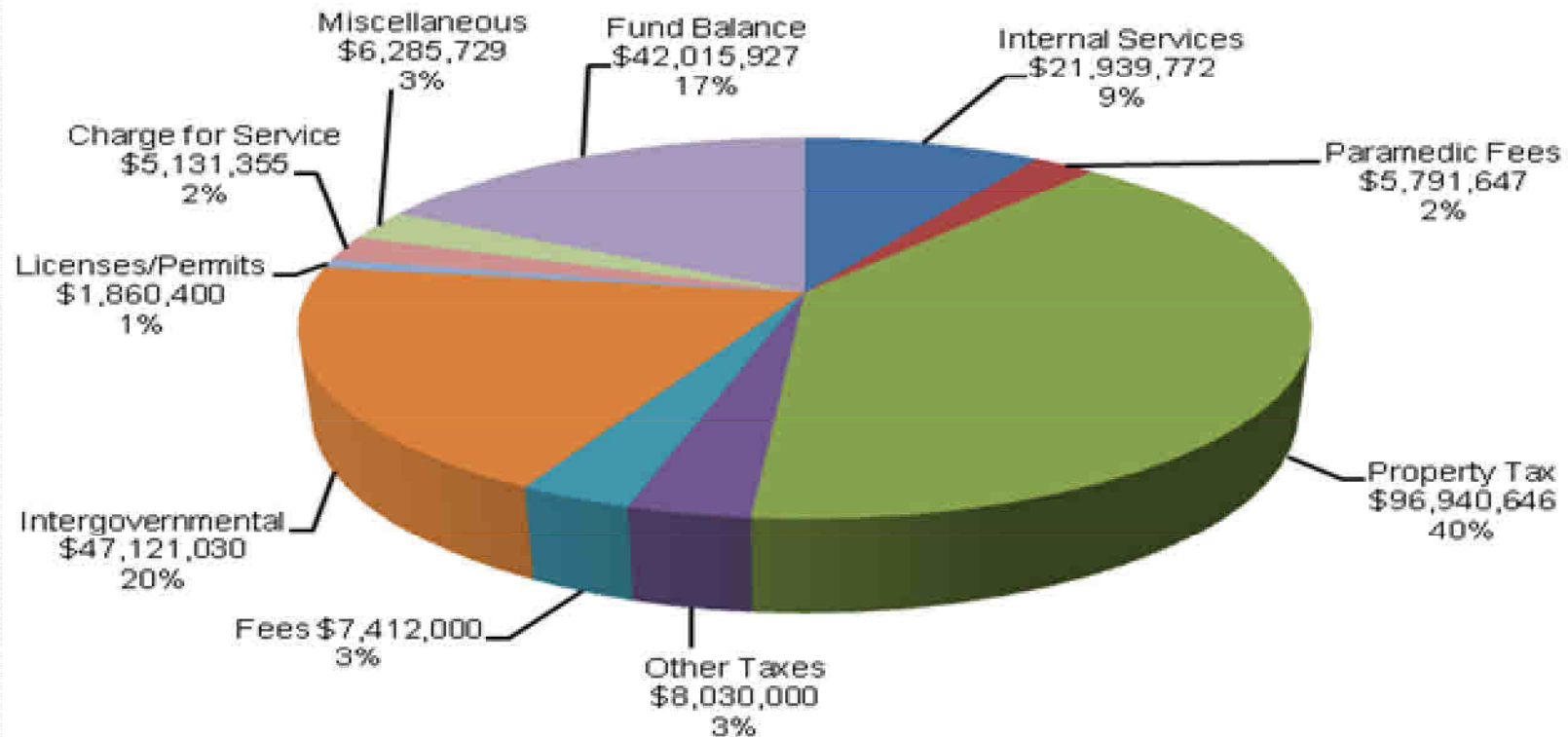
Home Rule Charter

- Home Rule gives Weld more freedom than other counties.
- Unique aspects of the charter:
 - 6 member County Council.
 - Enlarged board of County Commissioners.
 - More citizen participation through boards and commissions.
 - Mandated balanced budget

Revenue

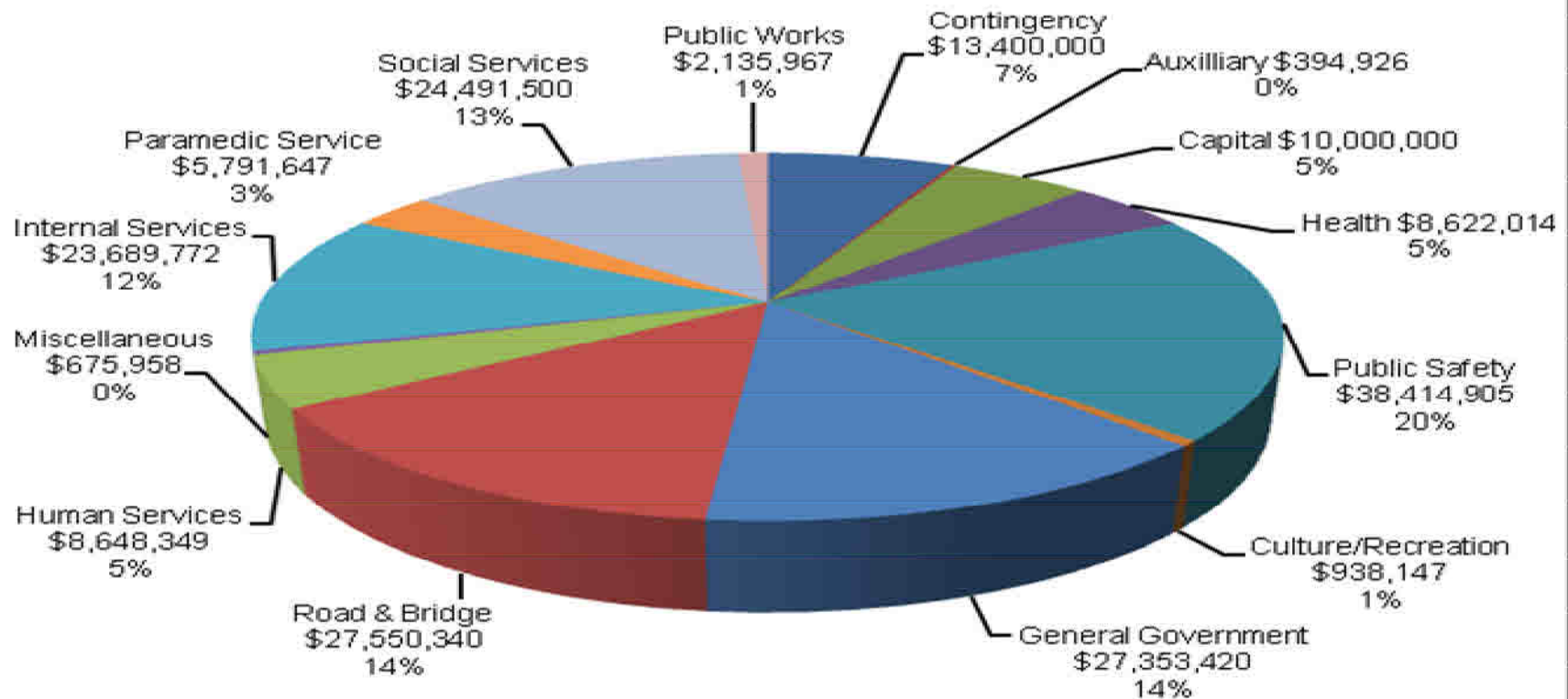
2010 REVENUE

Total \$242,528,506 (2009 \$229,609,951)



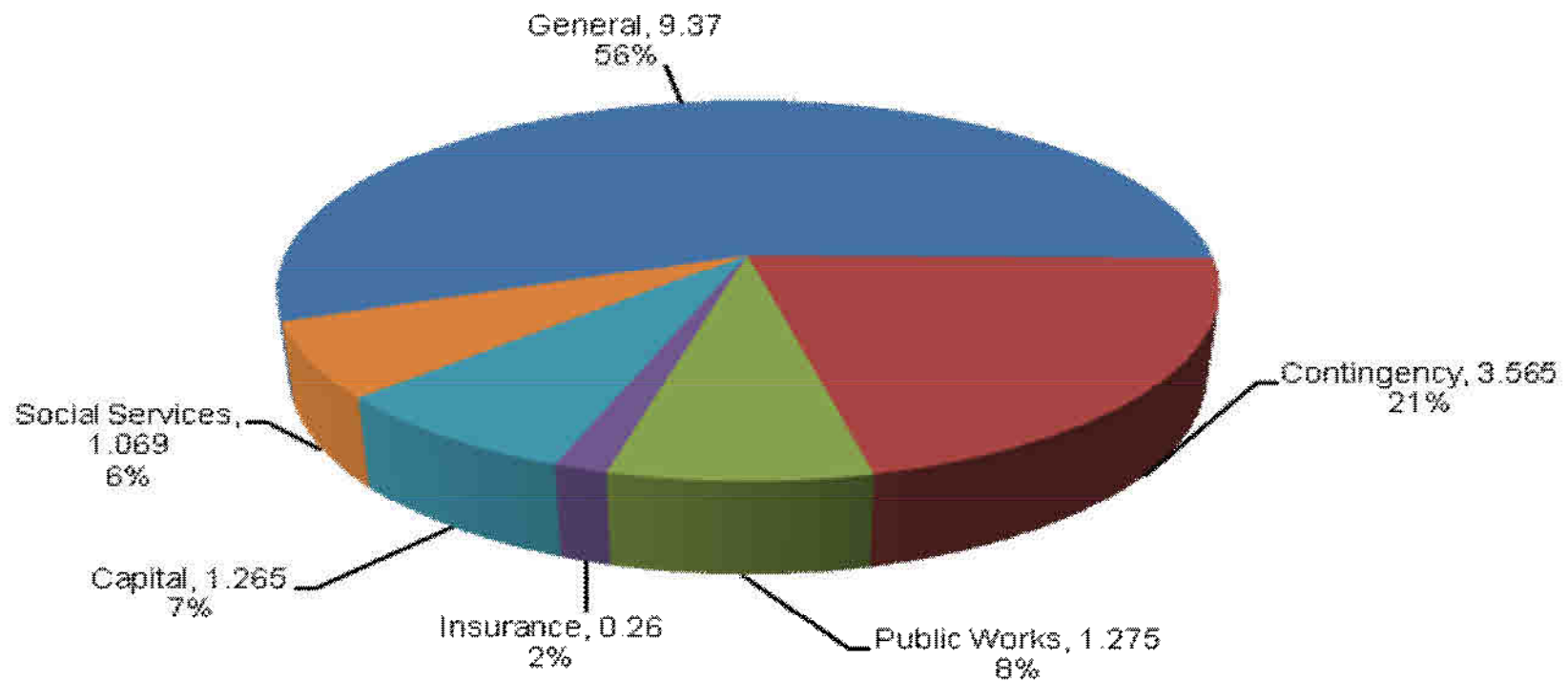
Expenditures

2010 EXPENDITURES Total \$192,106,945 (2009 \$204,640,332)



Mill Levy

2010 MILL LEVY - 16.804



What's Missing

- County Sales Tax.....NO
 - Municipal and State Tax still apply.
- Debt Service..... NO

Challenges

- Economy.
 - TANF is up 70%.
 - 12 new Human Services positions posted to meet caseload.
- Aging work-force.

Recent Innovations

- Consolidation of Planning and Health.
- Relinquished Head Start.
- Onsite employee medical clinic.
- New Justice Services Division to reduce growing inmate population.

Division of Service

COUNTY WIDE SERVICES.

- Social Services.
- Health Services.
- Human Services

SERVICES ALSO PROVIDED BY CITIES AND TOWNS.

- Planning and Zoning.
- Public Works.

Shared Services

- Regional emergency dispatch.
- Law enforcement for small communities.
- Ambulance.
- Crime Lab.

Regional Relations



Questions?