



# Leadership Northern Colorado County Government

---



# A Brief History of County Government

---

- Counties trace their roots to the English shire of a thousand years ago. Serving a dual function, the shire acted as the administrative arm of the national government as well as the citizen's local government.
- Up until 1066, the shire was the basic unit of government, After 1066 the shire-reeve was accepted as the governmental authority in the Shire. In England, each court was placed under the control of a Count - thus comes the term County.
- The County form of government is the oldest form of government in the US, other than the governing structures of the native Americans. It was first brought to the use in 1634 to Virginia. The structural form Of the shire was adopted along the eastern seaboard of North America by the colonists and adapted to suit the diverse economic and geographic needs of each of the colonies.
- **W**hen our national government was formed, the framers of the Constitution did not provide for local governments. Rather, they left the matter to the states. Subsequently, early state constitutions generally conceptualized county government as "an arm of the state...."



- The separation of elected officials came in the 1800's to break up the power of the courthouse bosses and abuse of power by those in charge.
- When our national government was formed, the framers of the Constitution did not provide for local governments. Rather, they left the matter to the states. Subsequently, early state constitutions generally conceptualized county government as "an arm of the state...."



○The separation of elected officials came in the 1800's to break up the power of the courthouse bosses and abuse of power by those in charge.

# Authority of Counties

---

- Counties in most parts of the nation, including Colorado are unique in that they have the dual role of delivering local services, such as roads and law enforcement, but also serve as the administrative arms of the State to provide such uniform statewide services such as welfare and courts.
- Counties can only wield those legislative powers which are specifically granted by the state legislature, and those which are implied or reasonably necessary to carry out their duties. This role has been known as "**Dillion's Rule**" for nearly a century and a half. This was first espoused by the Chief Judge of the Iowa Supreme Court, John F. Dillion in 1868.





# County Basics

---

- Counties are not rural image of municipalities.
- Arm of the State. Designed primarily to deliver State services at a local level.
- Larimer County is a Statutory County. Weld County is a Home Rule County
- Home Rule is possible for counties, but it is not the same as for municipalities



# The County Difference

---

- broad tax base
- area wide jurisdiction
- economy of scale
- No court system of their own
- Little legislative power and may exercise only powers given to them by the state.
- Unique from other levels of government in that the powers of the executive, legislative and sometimes judicial branches are all exercised at times by the Board of County Commissioners.
- Forty-seven of the fifty states have operational county governments. Connecticut and Rhode Island are divided into geographic regions called counties, but they do not have functioning governments, as defined by the Census Bureau. Massachusetts recently began eliminating county governments from their local government structure

# County Factoids



Number of Counties in the US – 3,042

Largest County – North Slope County, Alaska – 227,559 sq. miles

Smallest County – Arlington County, Virginia – 67 sq. miles

Most populace County – Los Angeles County, California – 9,878,554  
(96,171 county employees)

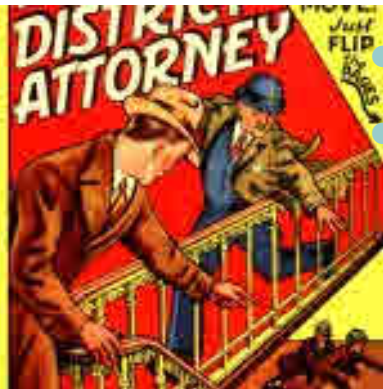
Least populace County – Loving County, Texas – 170

Largest county in Colo. – Las Animas, 4,772 sq. miles

# Constitutional Elected Officials

---

- Ministerial in nature for a specific area/areas (Executive in nature)
- Not legislative or quasi-judicial
- Responsible only to the voters.
- Budgetary responsibility limited to funds allocated by BOCC.
- DA exception



- Official of a Judicial District
- Utilizes county structure by convenience

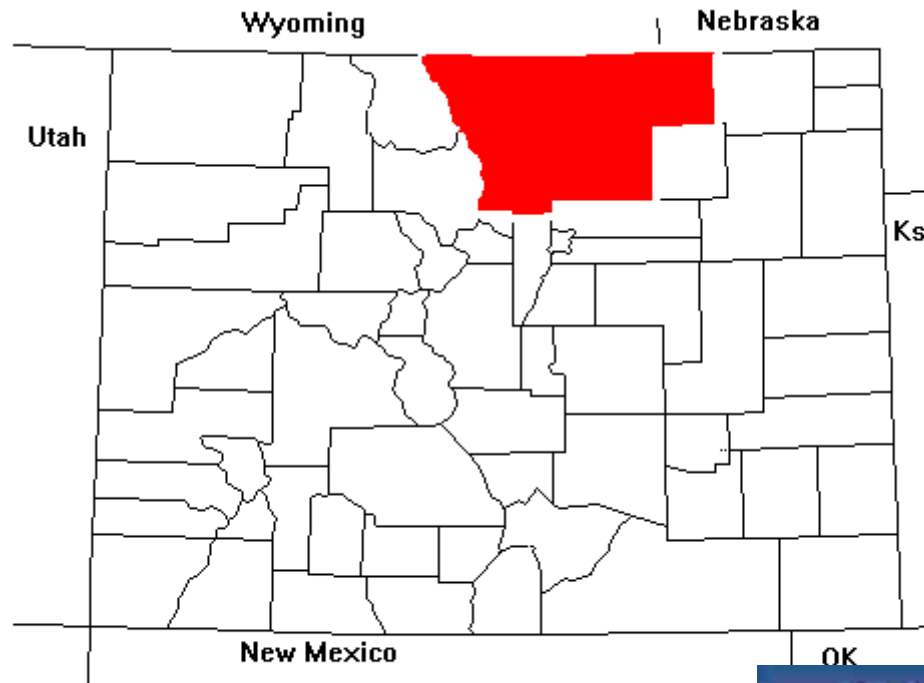
# Board of County Commissioners

---

- Serve in three roles
  - Executive
  - Legislative
  - Quasi-Judicial
- Responsible for the fiscal management of the county including budgeting
- No authority over management or outcomes of other elected offices.



# Weld/ Larimer Specific Information





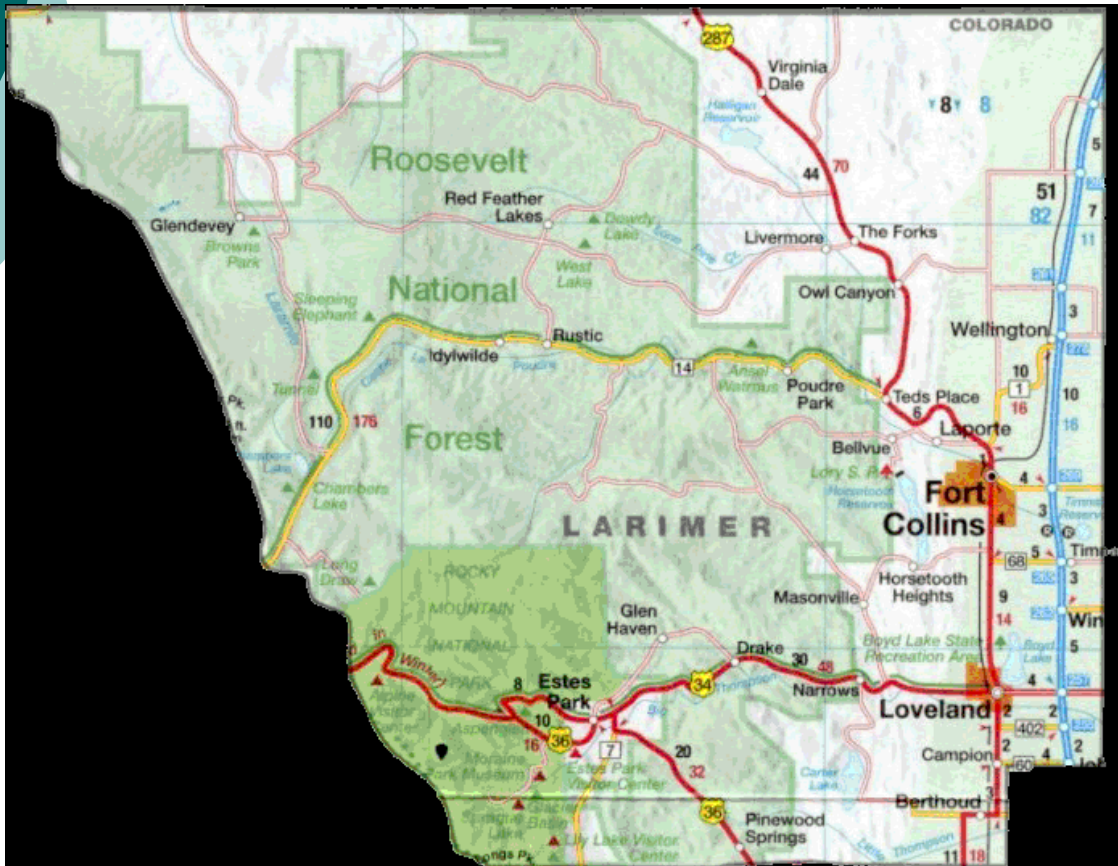


# Larimer County



○ County Seat - Fort Collins	
○ Population (2009 estimate)	293,000
○ Size	2,640 square miles
○ Miles of County Roads	
○ -Paved	476
○ -Unpaved	596
○ 2009 Assessed Valuation	\$4,076,061,625
○ 2010 County Budget	\$290,639,601
○ County Mill Levy	22.435
○ Voter Registrations	183,900
○ County Employees	1,640
○ Average Daily Jail Population	490
○ Beds in Jail	520

# Larimer County

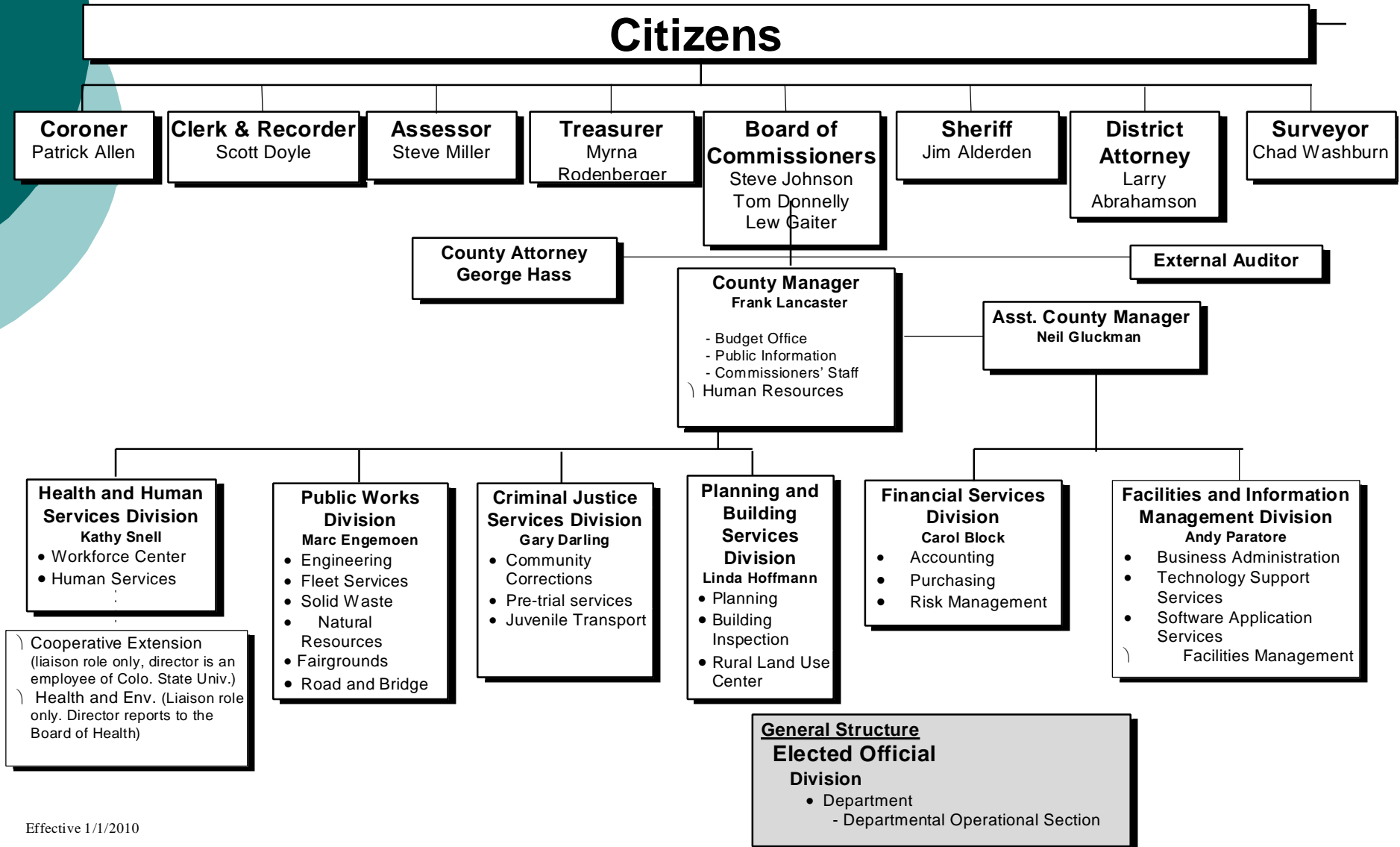


## Municipalities

- Fort Collins
- Loveland
- Estes Park
- Berthoud
- Wellington
- Windsor
- Timnath
- Johnstown



# Larimer County Organizational Chart

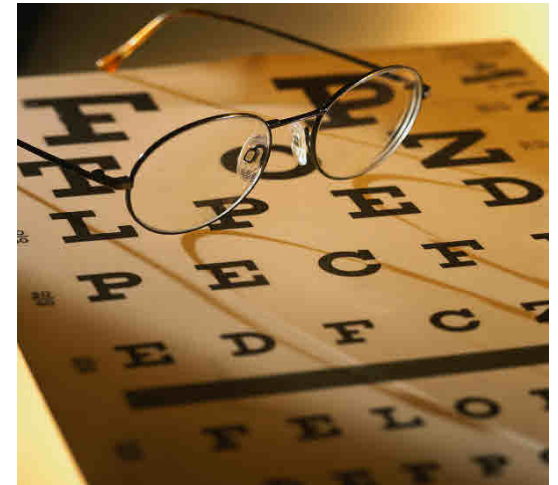


# Larimer County Vision



**Larimer County will add value to the lives of its citizens by:**

- **Building Partnerships**
- **Being customer driven**
- **Empowering People to Take Responsibility**
- **Being a Fulfilling and Enjoyable Place to Work**
- **Being A Good Steward Of Public Resources**

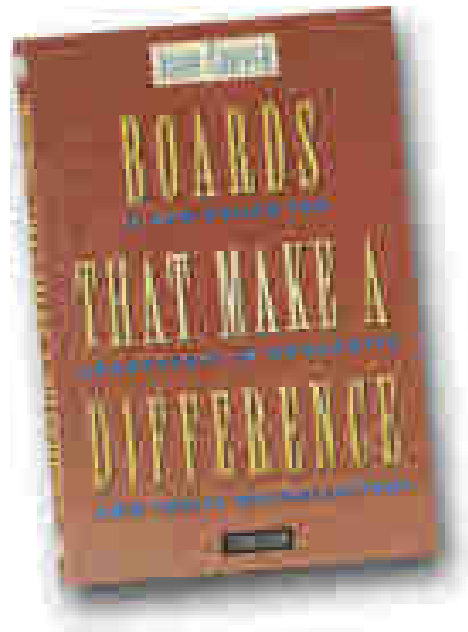


# Policy Governance

---

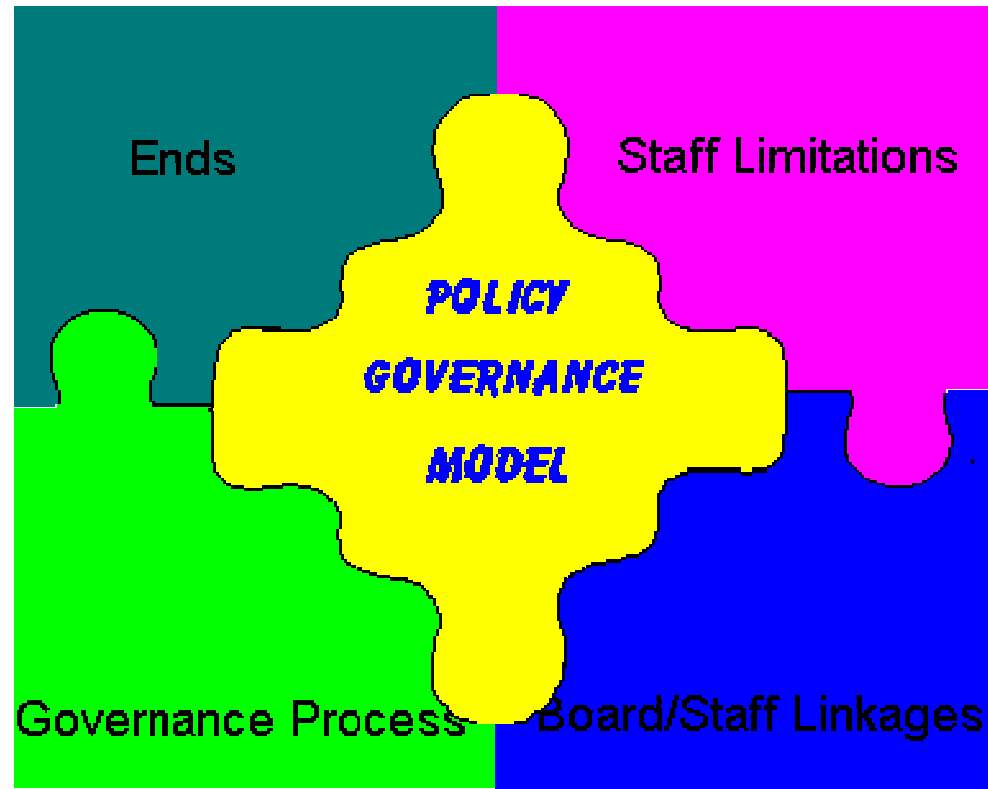
based on the work of Dr. John Carver

Boards That Make a Difference (Jossey-Bass, 1990)





# 4 Basic areas of Policy Governance



# What do We Do?



- a. Landfill
- b. Child Welfare
- c. Septic Tank Inspections
- d. Road Maintenance
- e. Restaurant inspections
- f. Food Stamps
- g. Marriage Licenses
- h. Probation services
- i. Purchase burial plots
- j. Job training
- k. Fighting Forest Fires
- l. Run Elections
- m. Screen juvenile offenders
- n. Autopsies
- o. Victims' Assistance Programs
- p. County Fair
- q. Track infectious disease
- r. Maternity assistance
- s. Potable Water Quality programs
- t. Community-wide recycling
- u. Cable TV supervision
- v. Noxious weed control
- w. Household Hazardous Waste Disposal
- x. Jail operations
- y. Foster Care Coordination
- z. Veteran's Services
- aa. Airports
- ab. Birth and Death Certificates



# What do We *Don't* Do?



- a. Landfill
- b. Child Welfare
- c. Septic Tank Inspections
- d. Road Maintenance
- e. Restaurant inspections
- f. Food Stamps
- g. Marriage Licenses
- h. Probation services
- i. Purchase burial plots
- j. Job training
- k. Fighting Forest Fires
- l. Run Elections
- m. Screen juvenile offenders
- n. Autopsies
- o. Victims' Assistance Programs
- p. County Fair
- q. Track infectious disease
- r. Maternity assistance
- s. Potable Water Quality programs
- t. Community-wide recycling
- u. Cable TV supervision
- v. Noxious weed control
- w. Household Hazardous Waste Disposal
- x. Jail operations
- y. Foster Care Coordination
- z. Veteran's Services
- aa. Airports
- ab. Birth and Death Certificates



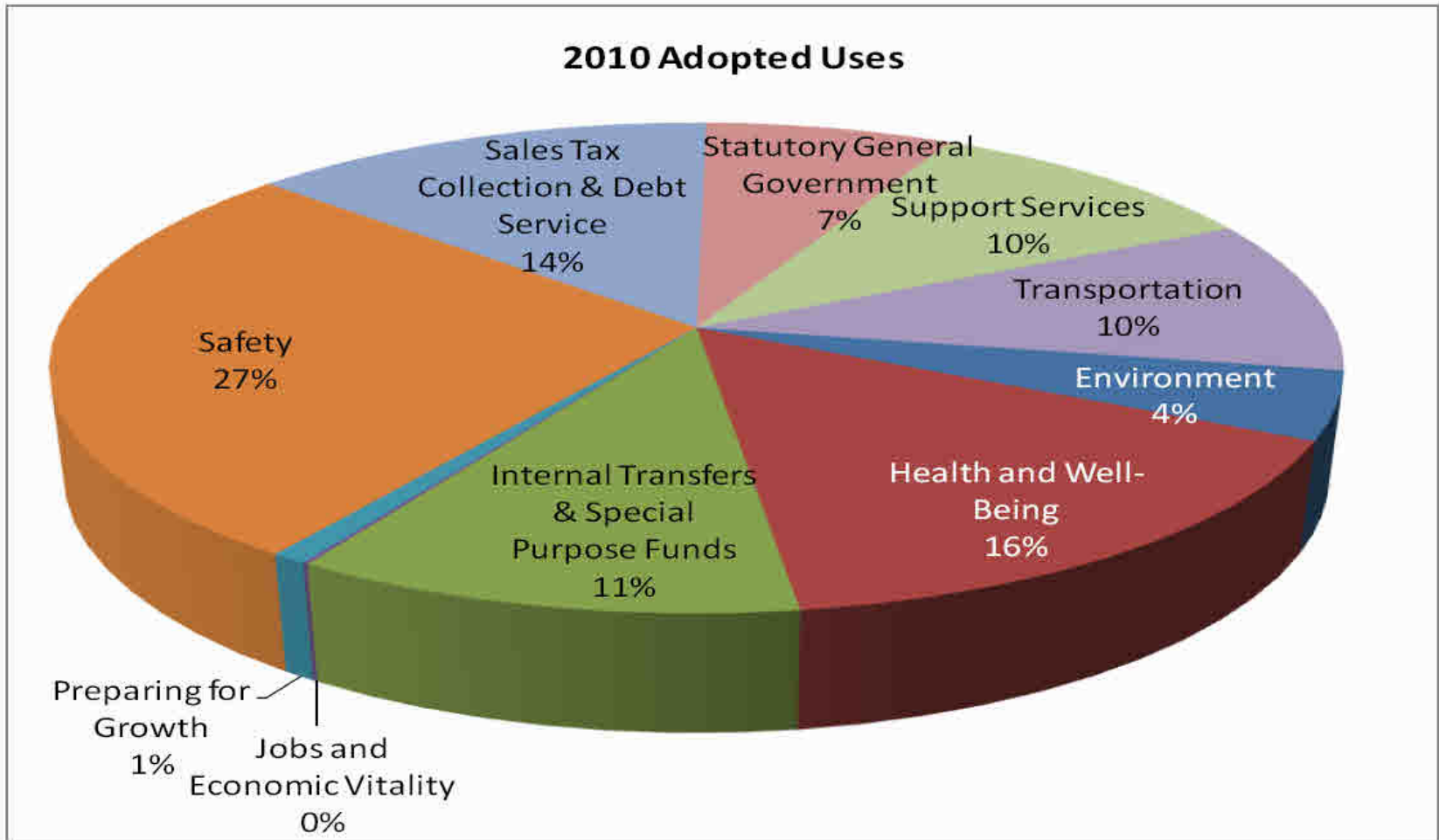


# Budget

**2010 Adopted Budget \$ 290,639,601**

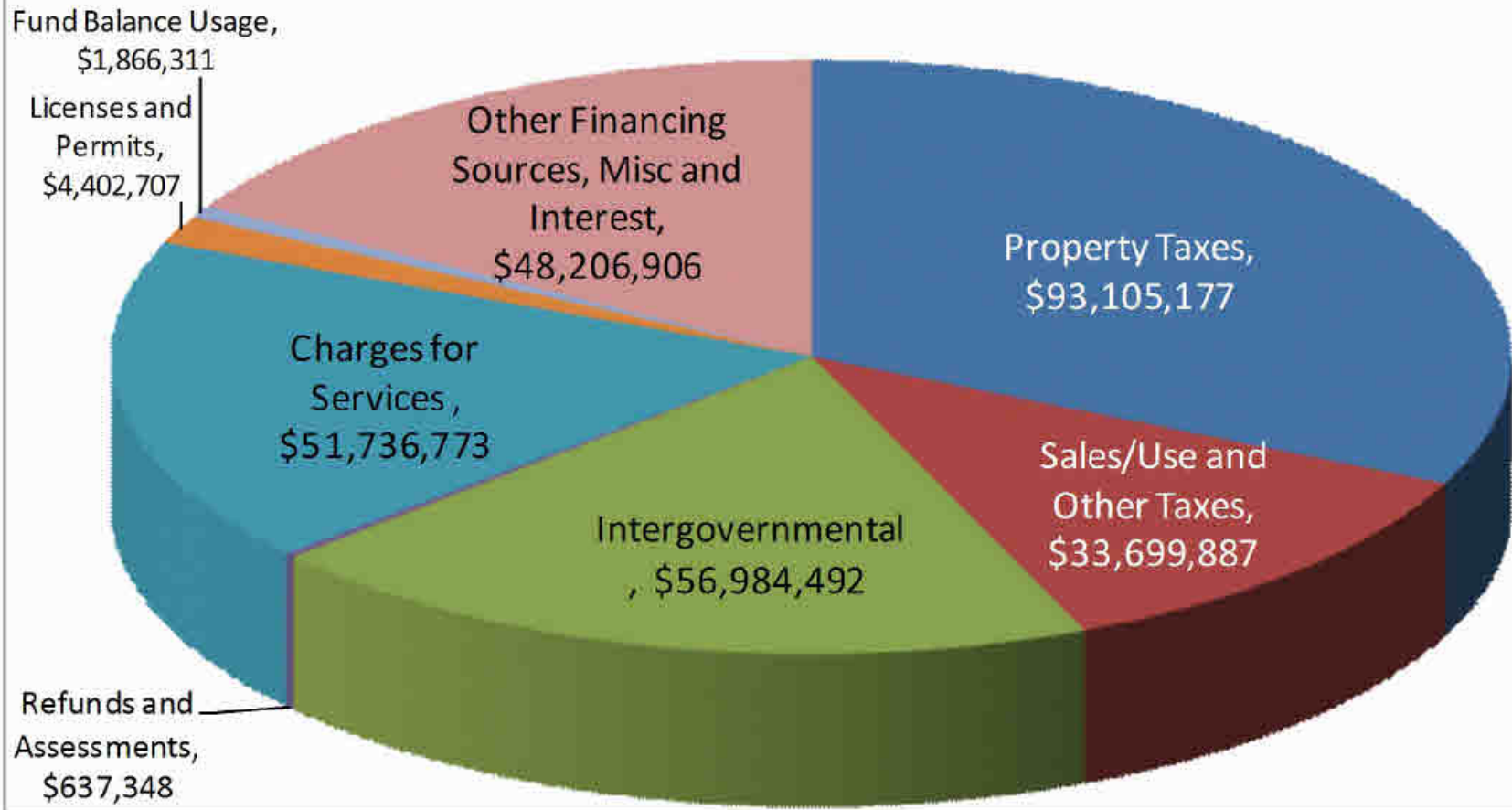


## Uses of Funds:



## Sources of Funds:

### 2010 Estimated Sources



<b><u>Where the Taxes Go:</u></b>	<b><u>For 2007</u></b>	<b><u>For 2008</u></b>	<b><u>For 2009</u></b>	<b><u>For 2010</u></b>	<b><u>Change for 2010</u></b>
Your School District	1032.56	1030.42	1025.91	1056.69	30.78
<b>County Government Services</b>	<b>441.00</b>	<b>463.13</b>	<b>462.73</b>	<b>477.49</b>	<b>14.76</b>
<b>County Foothills Gateway</b>	<b>15.27</b>	<b>16.03</b>	<b>16.03</b>	<b>16.51</b>	<b>0.48</b>
Your City Government	199.47	209.44	209.44	215.72	6.28
Your Hospital/Health Services District	44.12	46.33	46.33	47.72	1.39
Other (Water, Library, etc) Districts	<u>23.25</u>	<u>24.41</u>	<u>24.41</u>	<u>25.15</u>	<u>0.74</u>
Your Total Estimated Tax Bill:	1755.67	1789.77	1784.86	1839.28	<b>54.43 per Year</b>

### **How does County Government propose to spend the \$ 477.49 in 2010?**

<b><u>Service Category</u></b>	<b><u>Percent</u></b>	<b><u>\$ Per Year</u></b>
Safety	44.33%	\$ 216.45
Support Services	21.63%	103.28
Transportation	12.47%	59.54
Health & Well-Being	12.68%	60.55
Statutory General Government	5.53%	26.41
Preparing for Growth	1.75%	8.36
Environment	0.36%	1.72
Jobs Creation & Economic Vitality	0.25%	1.19

# Future Challenges and Opportunities



Financial Challenges due to economy and the Colorado Tax Structure

- TABOR
- Gallagher
- Tax Increment Financing

Decrease in Property Values



# Future Challenges and Opportunities



## Criminal Justice Issues

- Need for alternatives to incarceration
- \$14,000,000 cliff in 2014



# Future Challenges and Opportunities



## Transportation Infrastructure



# Future Challenges and Opportunities

---



## Mountain Pine Beetle

