



Presented by
City Manager, Roy Otto

Greeley Council-Manager Form of Government

- Mayor & 6 Council-members
- 4 Wards: approx. equal in population
- 9 Department Directors
- City Manager, City Attorney and Municipal Judge report to Council

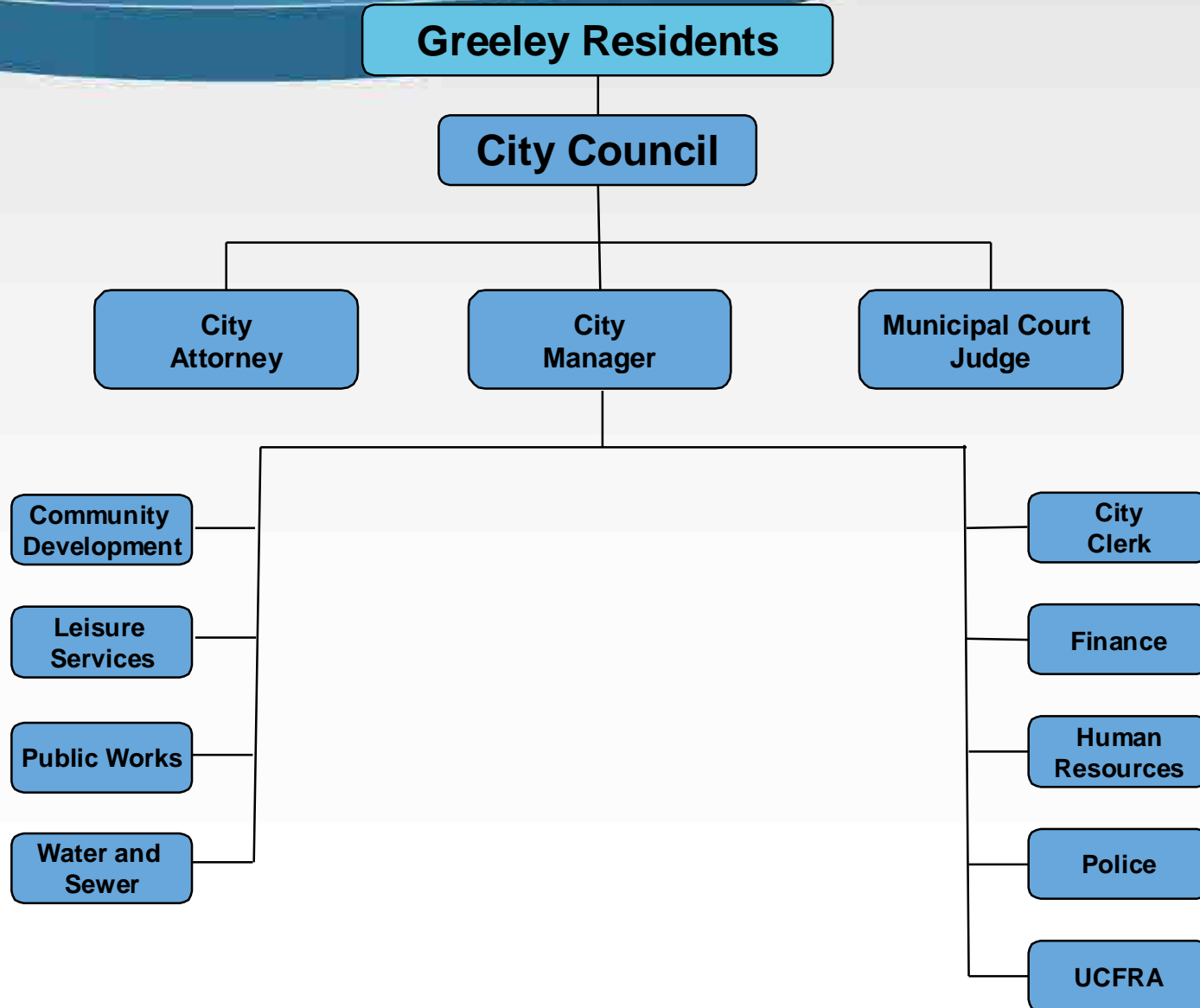
The Cities and Towns of Northern Colorado

Leadership Northern Colorado

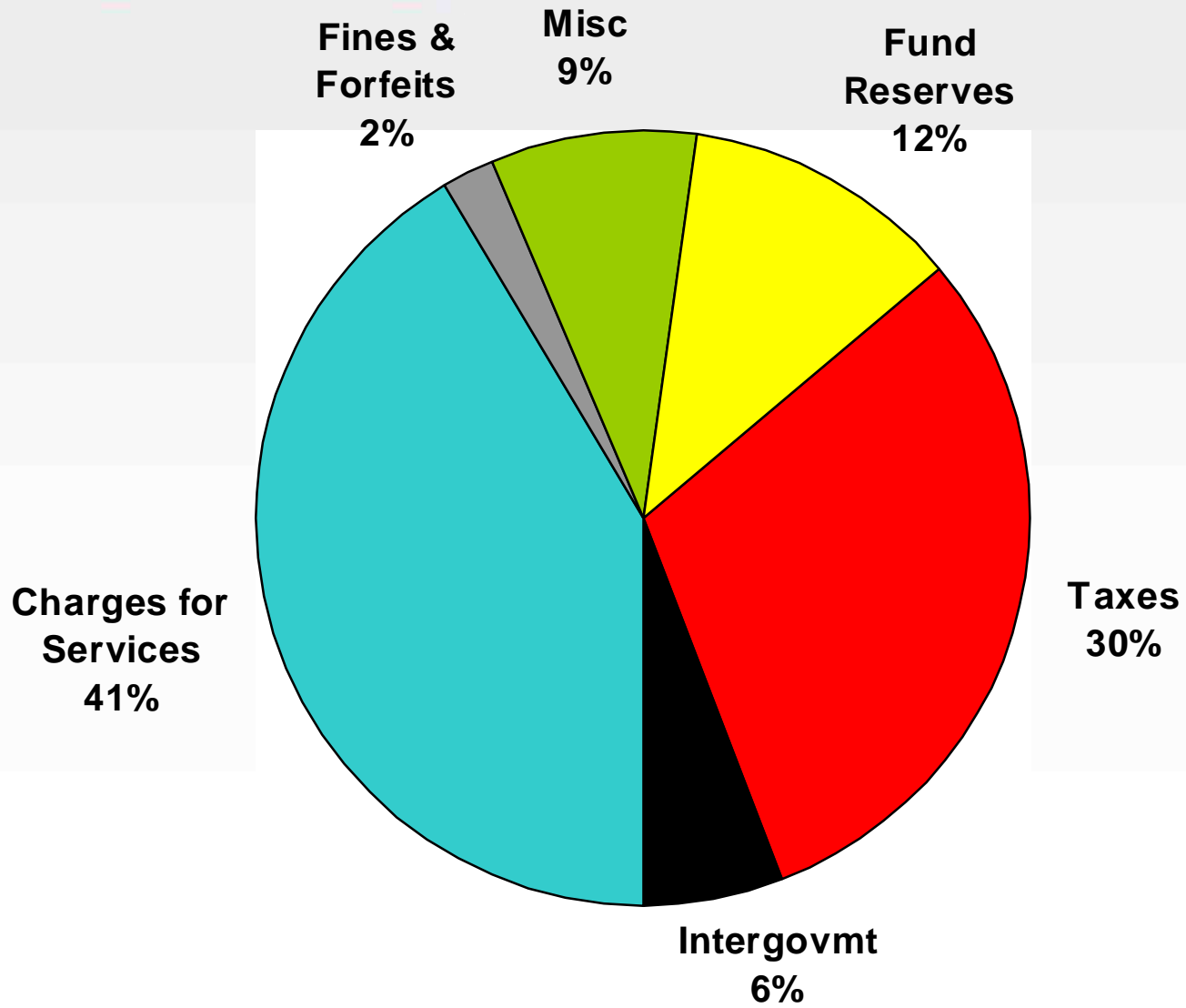
Greeley Highlights

- 919 Employees/873.25 FTE
- 145 Police Officers
- 356 miles of streets
- 2.7 million feet of water pipeline
- 2010 budget = \$170M

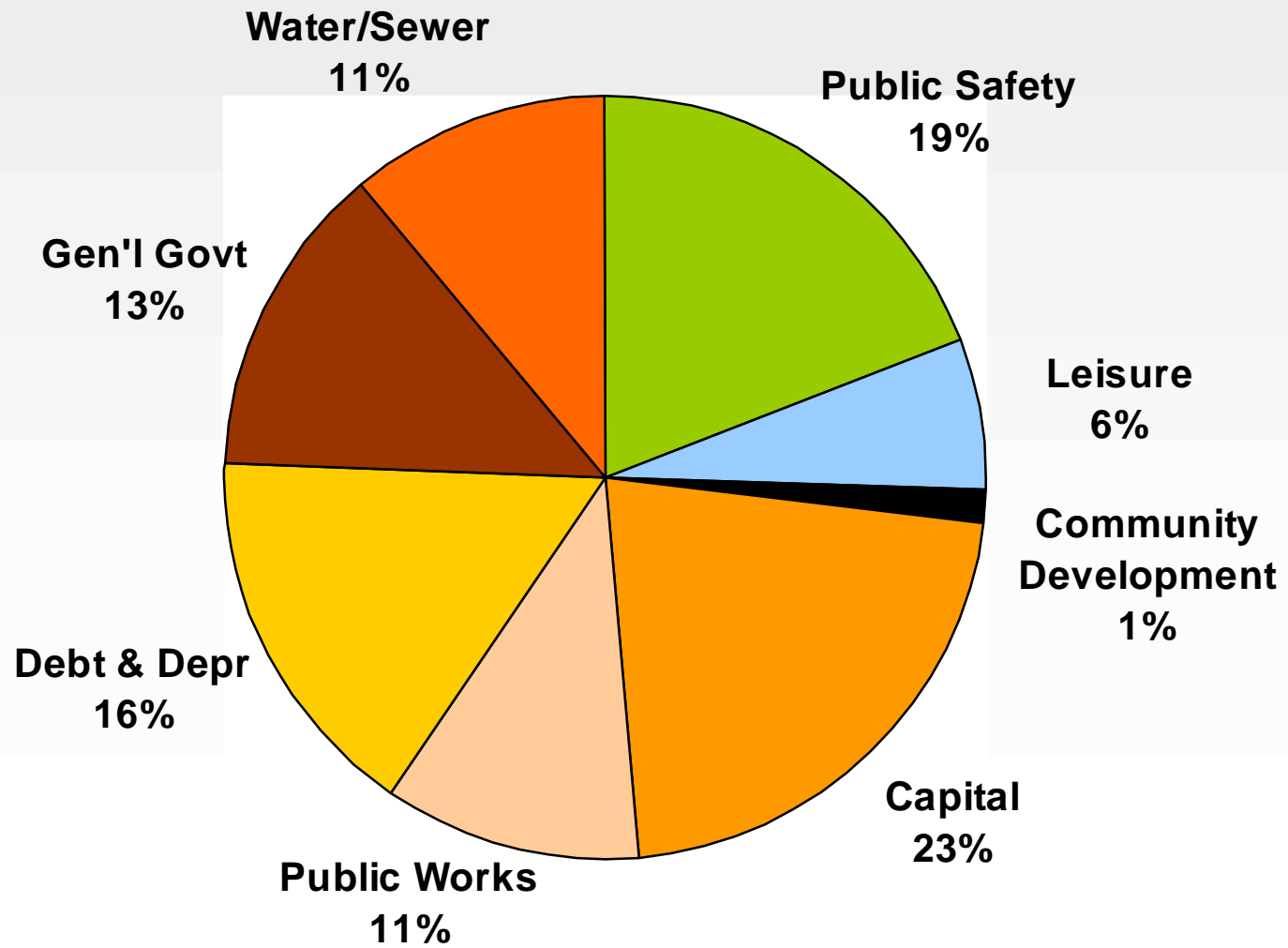
Council-Manager



Revenue By Source



Expenditure by Department



\$10 in Taxes Paid to the City of Greeley

How we do what we do . . .

Public Safety
\$4.56

Public Works
\$1.65

**Capital
Outlay**
\$.11



**Parks
&
Leisure Services**
\$1.84

**Community
Development &
General Government**
\$1.84

Promise of The Prairie Greeley, Colorado

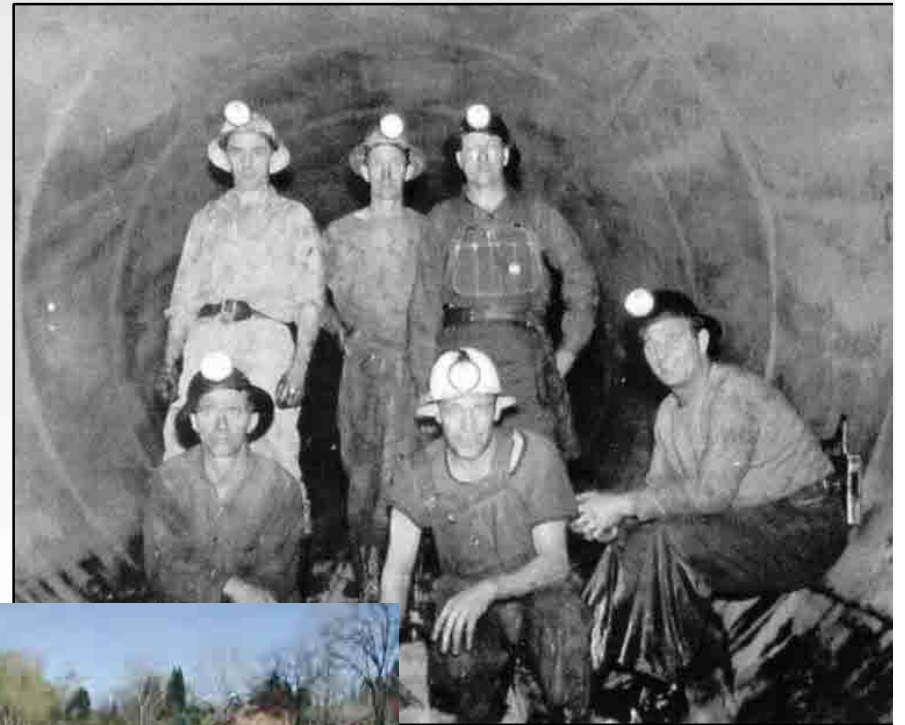
Greeley's Contributions in a Regional Context



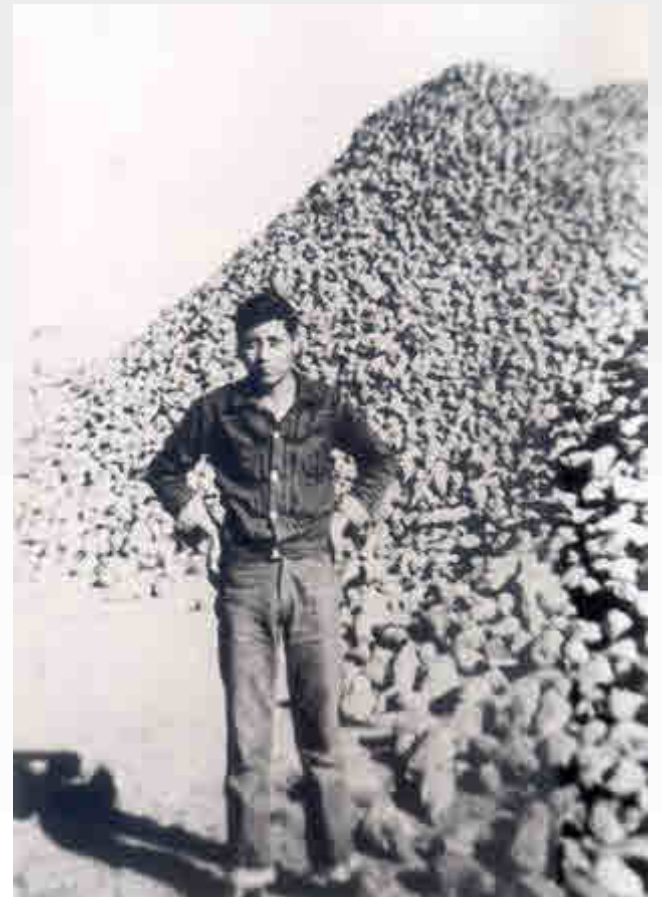
Proud History of the Union Colony: Education



Proud History of the Union Colony: Water



Proud History of the Union Colony: Agriculture

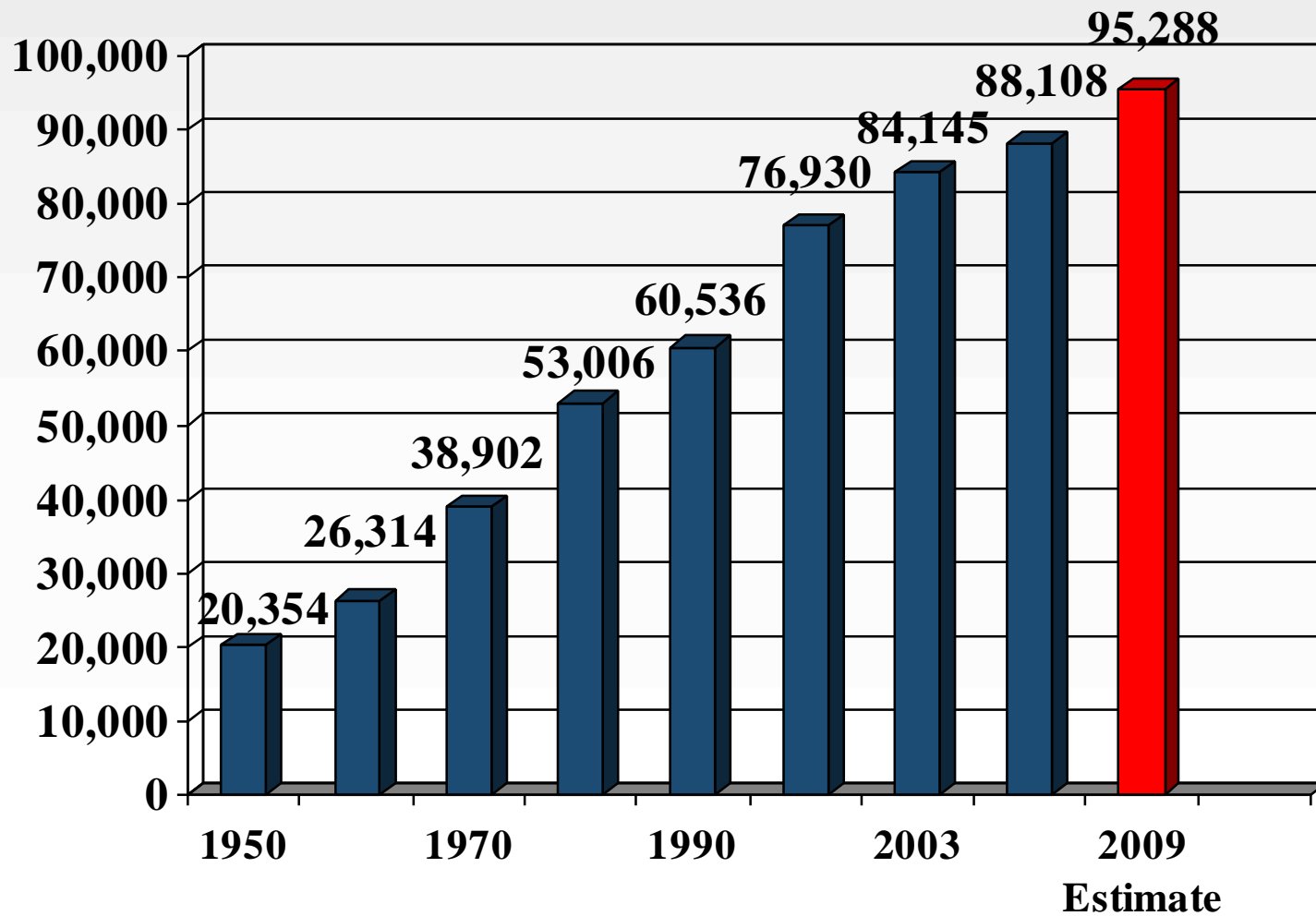


Greeley: Quality of Life



Population

Greeley Population Growth



What is the Biggest Regional Challenge?

What Is Regionalism?

- Geographic Features
- Political Boundaries
- Economic Trade Area
- Common Interests
 - Government Services
 - Roads
 - Recreation



Practically Speaking... Collaboration

- Does it produce equitable benefits?
- What's fair?
- “Where you stand depends upon where you sit . . .”



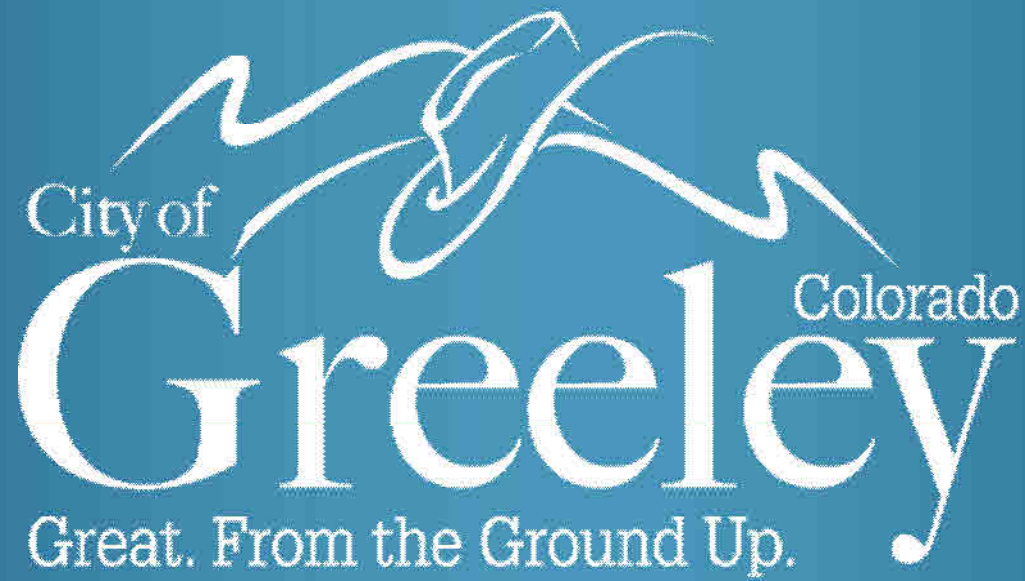
Think About...

- Water Rights
- Regional Transportation Authority
- JBS/Pilgrim's Pride Employee Relocation



“If you belittle what you have...it becomes less. If you appreciate what you have...it becomes more.”

Gelene McDonald, Greeley resident



City of

Colorado

Greeley

Great. From the Ground Up.