

Leadership Northern Colorado

Presented by Darin Atteberry
Fort Collins City Manager
February 23, 2010

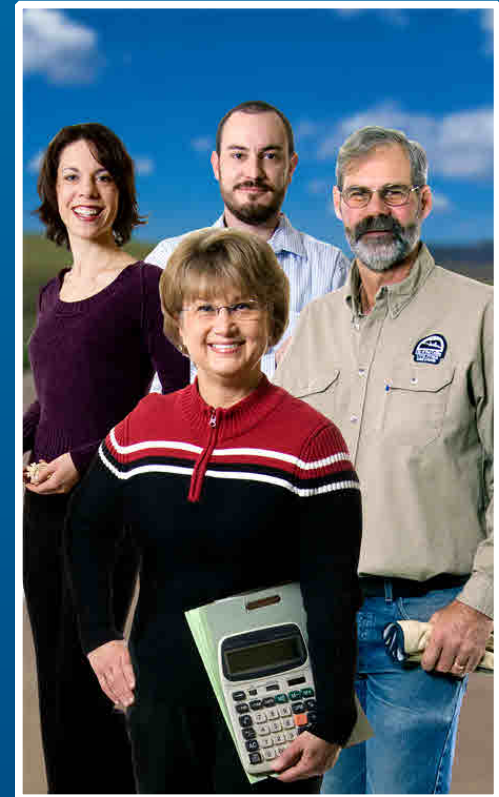
Fort Collins at a Glance

- Population: 137,200
- Size: 53.38 square miles
- Median age: 29.4
- Median income, family of four: \$72,200
- Education level: 48.2% have completed four or more years of college

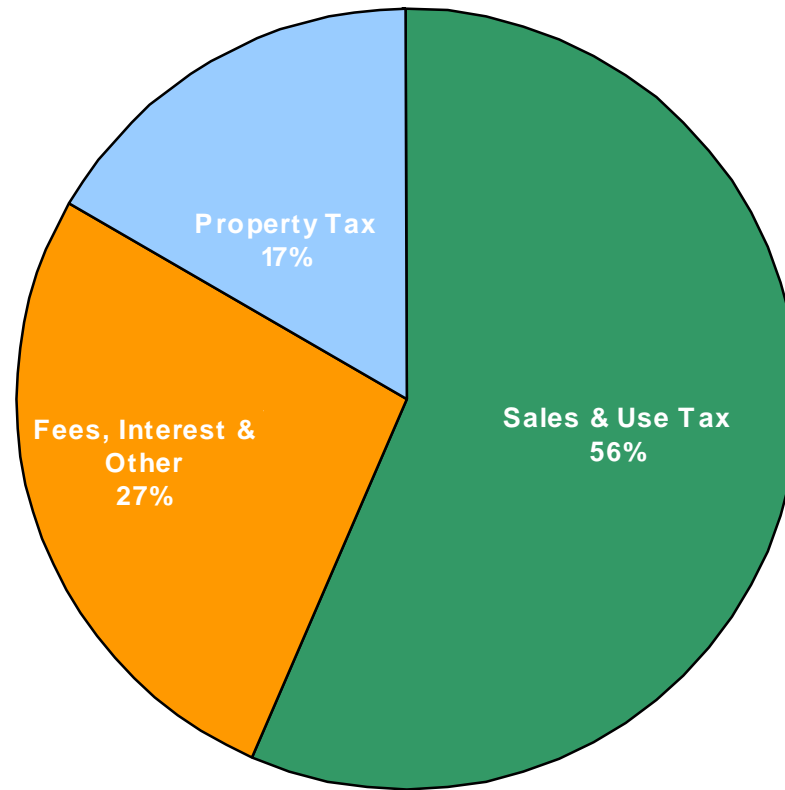


City of Fort Collins

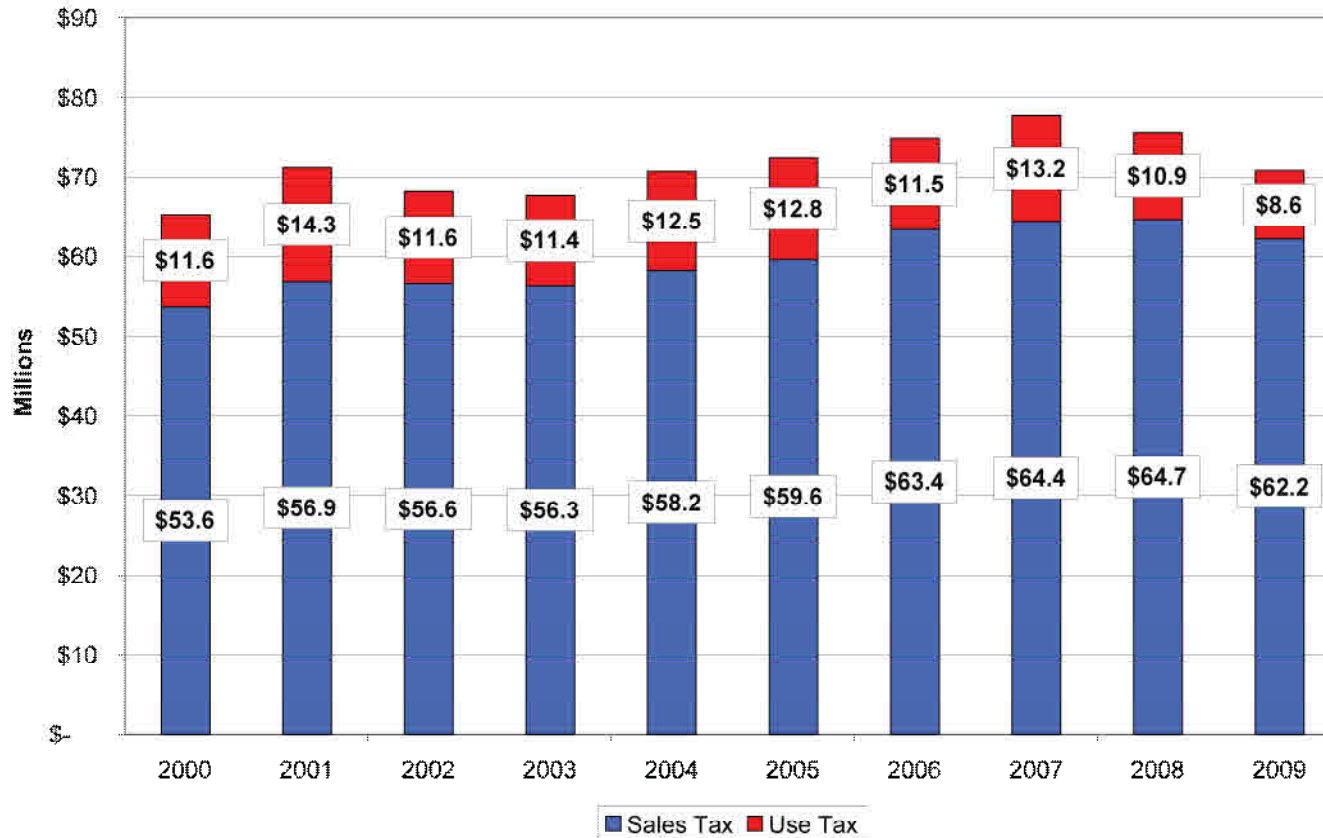
- Our vision: “We are passionate about creating a vibrant, world-class community”
- Council/Manager form of government
- 1,505 FTE’s
- \$351 million operating budget



General Fund Revenue

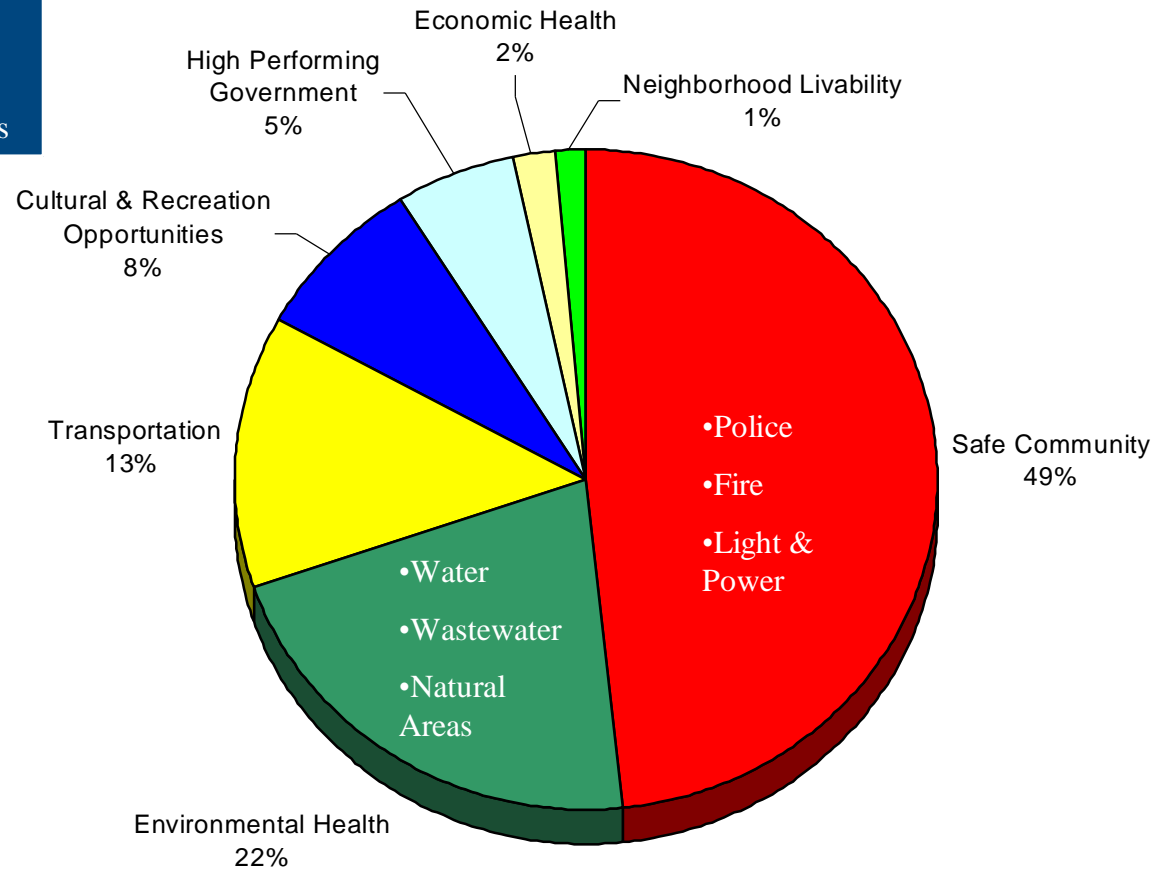


Sales & Use Taxes (all)

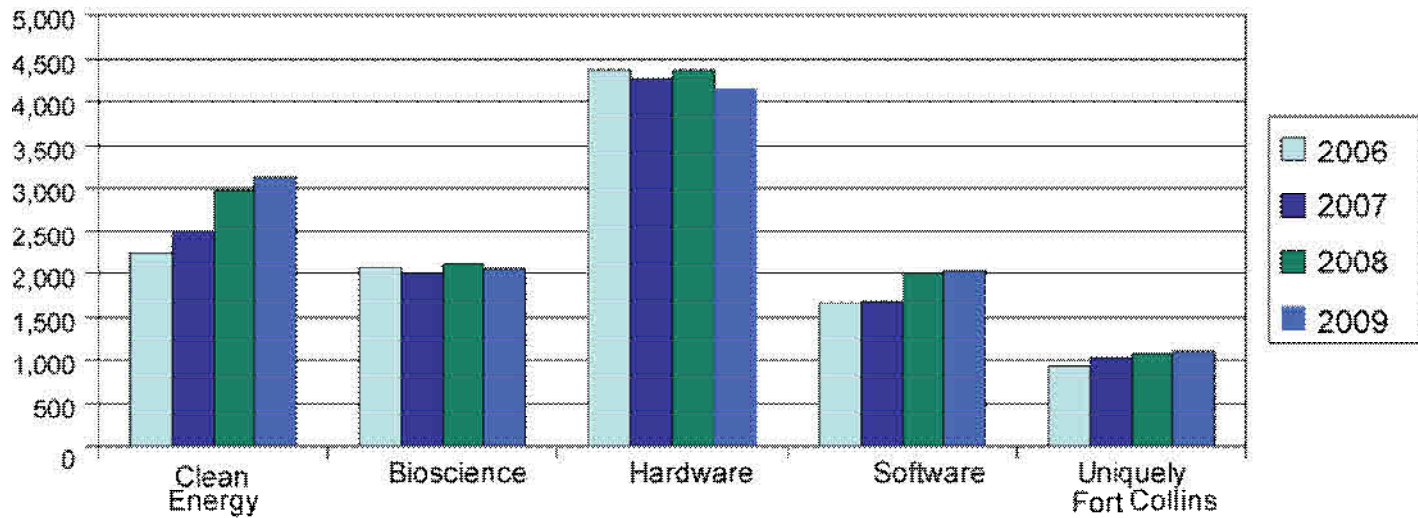


2009 Net Expenditures by Outcome

Does not include internal service funds



Jobs Growth by Economic Industry



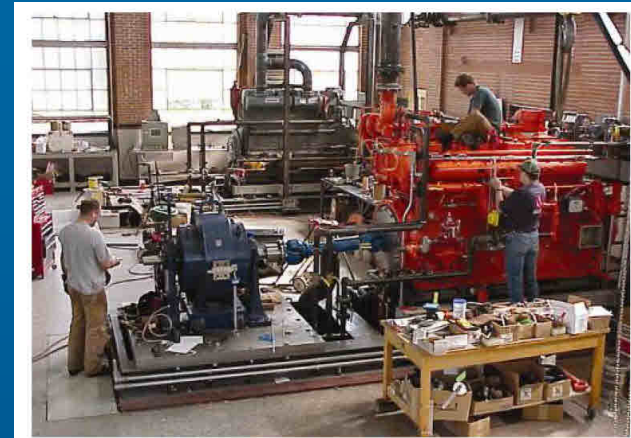
% change is for January - June 2008 vs. January - June 2009

Full-Service City



Role in Northern Colorado

- A major employment center
 - 47% of jobs in Larimer County are in Fort Collins
- Education and government center
- Innovation economy
 - Growing our own
- Environmental leadership
- Historic regional center



Regional Partnerships



Platte River Power Authority



Poudre Fire Authority

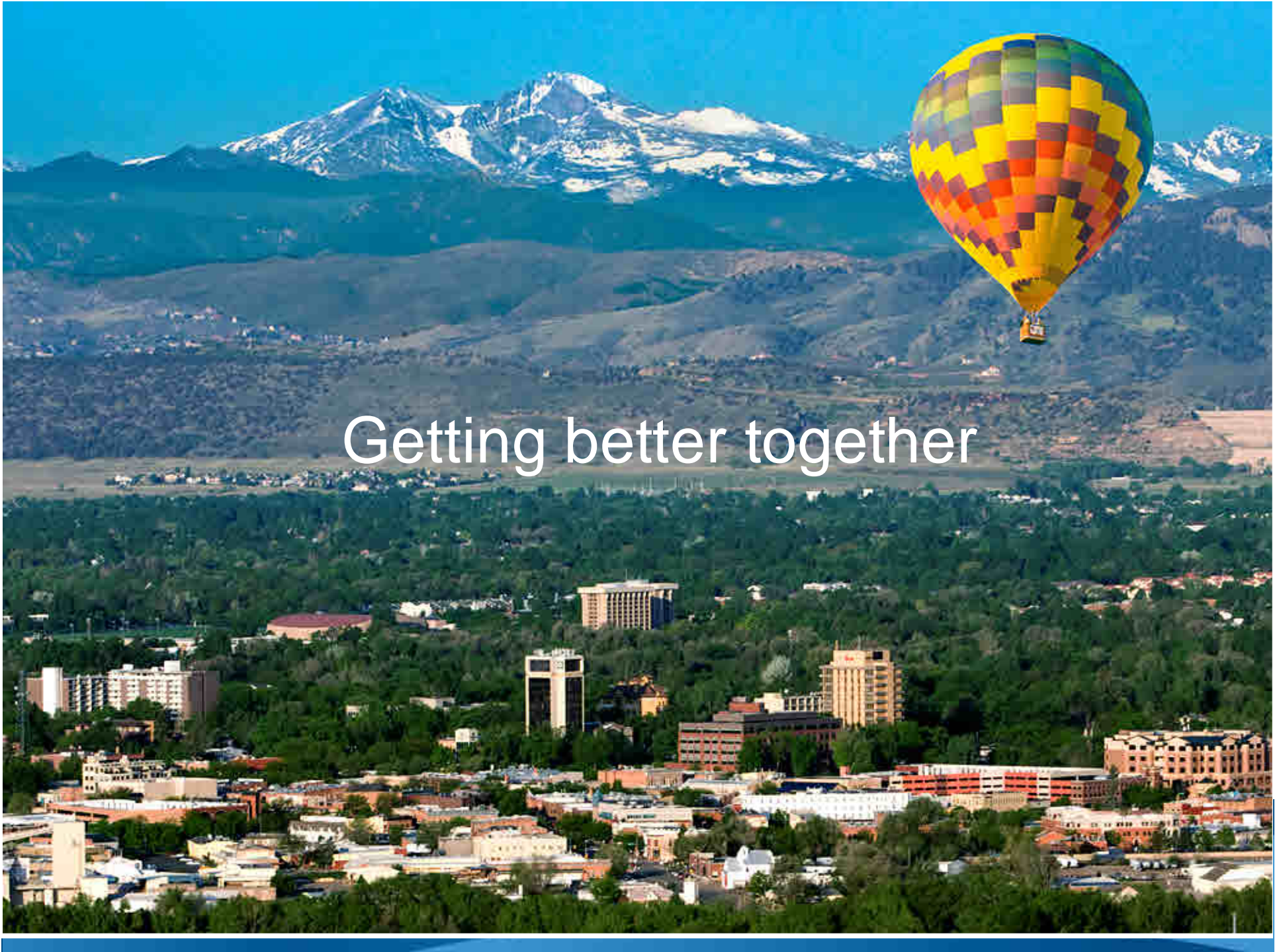


City Challenges/Opportunities

- “Plan Fort Collins”
 - Community build-out
 - Infrastructure quality, availability and funding
- Sustainability: integrating economic, environmental and social elements for policy development
- Resourcing our Future
 - House in order and appropriate role in economic development
- Maintaining high quality services in a financially challenged environment
- Long term focus vs. short term fires
- Perception of some that Fort Collins is not interested in regional cooperation

Regional Opportunities & Challenges

- Focus on our similarities versus our differences
- Region while maintaining our community DNA
- Move forward, getting over RTA failure
- Differing views/values on environmental and water supply issues
- Regional competition for sales tax
- Development along I-25 and maintaining our core cities
- Regional transit and transportation facilities
- Regional cooperation for target industries
- Shared services: Larimer County, City and Poudre School District, etc...
- Perceptions of government (Federal and state vs local)
- Open space and community separators



Getting better together